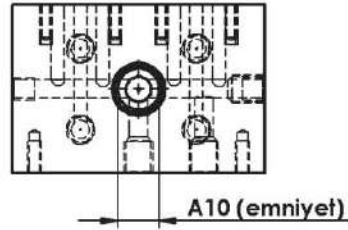
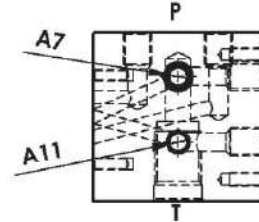
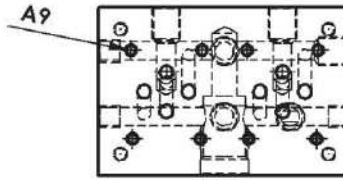
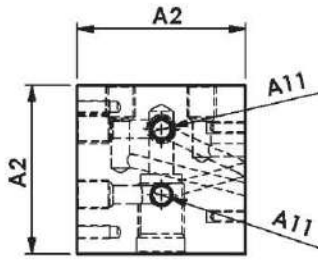
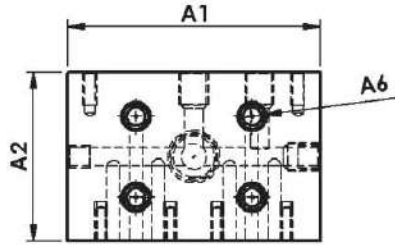
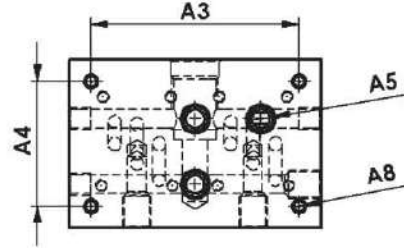
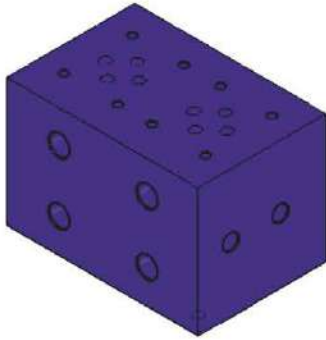


NG 6

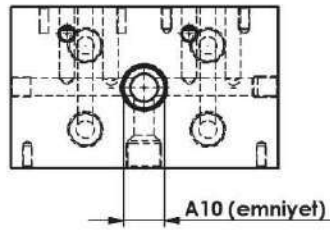
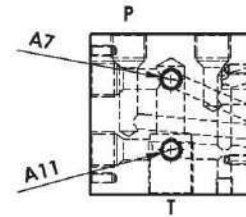
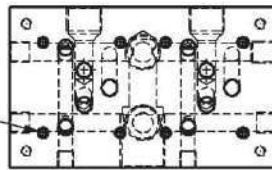
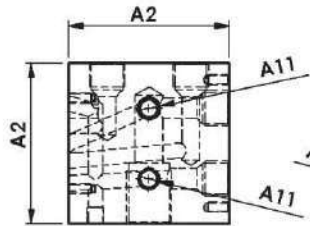
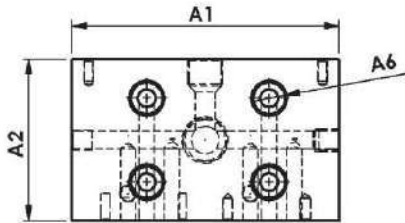
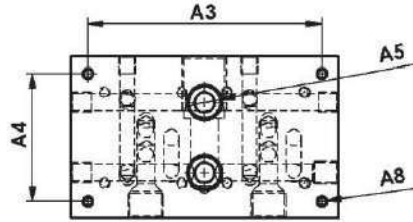
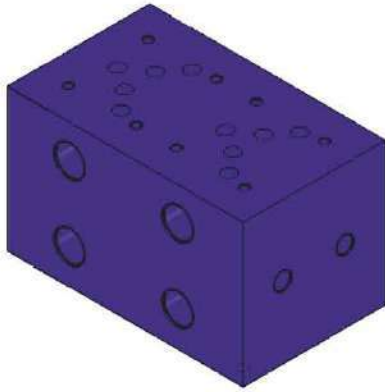
Hydraulic Plate



YERLEŞİM TİPİ	A1	A2	A3	A4	A5	A6	A7	A8	A9	A10	A11
TEKLİ	77	65	57	57	3/8"	3/8"	1/4"	M6	M5	1/2"	M10
İKİLİ	115	77	95	57	3/8"	3/8"	1/4"	M6	M5	1/2"	M10
ÜÇLÜ	168	77	148	57	3/8"	3/8"	1/4"	M6	M5	1/2"	M10
DÖRTLÜ	221	77	201	57	3/8"	3/8"	1/4"	M6	M5	1/2"	M10
BEŞLİ	274	77	254	57	3/8"	3/8"	1/4"	M6	M5	1/2"	M10

NG 10

Hidrolik Pleyt Hydraulic Plate



YERLEŞİM TİPİ	A1	A2	A3	A4	A5	A6	A7	A8	A9	A10	A11
TEKLİ	96	85	76	76	1/2"	1/2"	1/4"	M6	M6	3/4"	
İKİLİ	159	96	139	76	1/2"	1/2"	1/4"	M6	M6	3/4"	M12
ÜÇLÜ	232	96	212	76	1/2"	1/2"	1/4"	M6	M6	3/4"	M12
DÖRTLÜ	305	96	285	76	1/2"	1/2"	1/4"	M6	M6	3/4"	M12