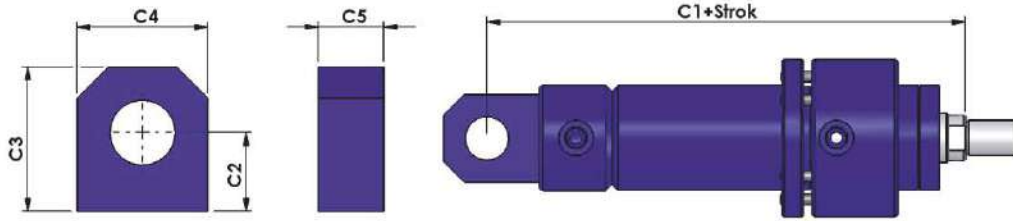
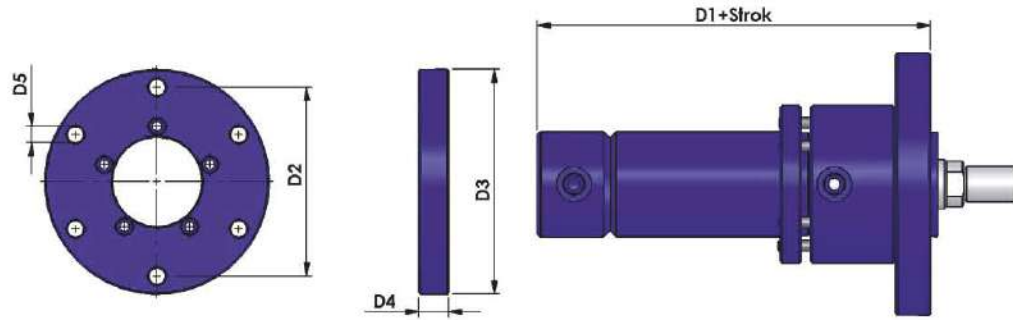


## HİDROLİK SİLİNDİR GRUBU

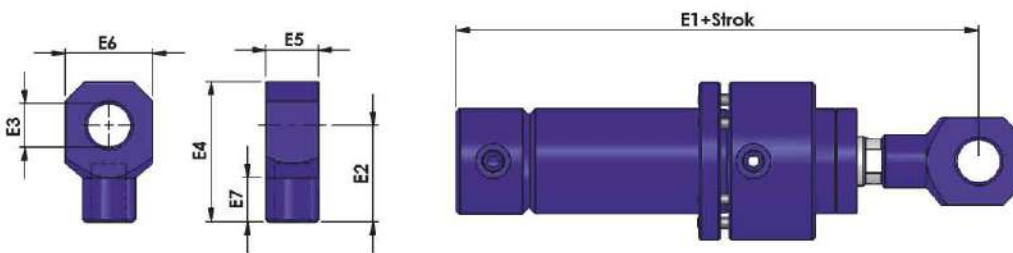
### EKLEM BAĞLANTI ( EB ) / SWIVEL FLANGE ( SF )



### FLANŞ BAĞLANTI ( FB ) / MAUNTING FLANGE ( MF )



### MAFSAL BAĞLANTI ( MB ) / JOINT MAUNTING ( JM )



Ø	C1	C2	C3	C4	C5	D1	D2	D3	D4	D5	E1	E2	E3	E4	E5	E6	E7
40	192	30	50	40	20	145	107	130	16	11	212	50	20	70	25	40	20
50	224	30	55	50	25	175	126	150	20	11	249	55	25	80	30	50	25
63	248	40	70	60	30	188	145	175	20	14	278	70	32	104	40	60	29
80	280	45	80	70	35	213	165	200	26	18	317	82	40	119	40	80	29
100	307	63	113	100	45	224	200	240	30	22	359	115	50	165	50	100	50
125	349	70	130	120	60	251	235	280	32	22	399	120	60	180	60	120	50
160	410	100	170	160	70	280	280	330	35	22	480	170	80	240	100	160	70
200	470	120	210	200	80	325	340	390	40	26	540	190	100	280	100	200	70

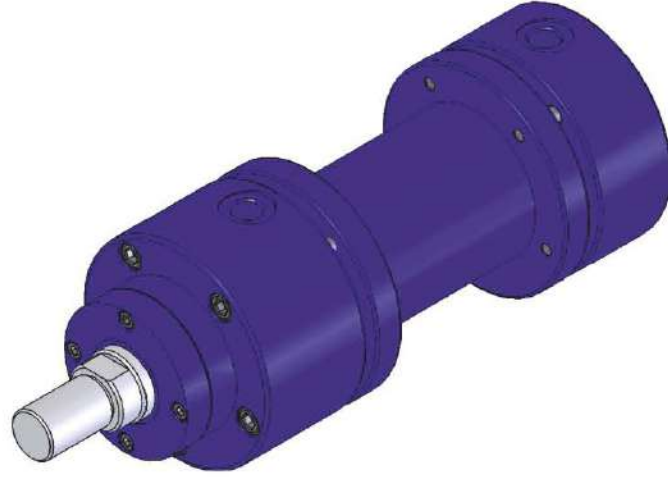
## HİDROLİK SİLİNDİR GRUBU

Hydraulic Cylinder Group



TEKMAK CETOP HİDROLİK SİLİNDİR  
TEKMAK CETOP HYDRAULIC CYLINDER

Ø40----Ø200 (THS)



TEKMAK CETOP HİDROLİK SİLİNDİR  
TEKMAK CETOP HYDRAULIC CYLINDER

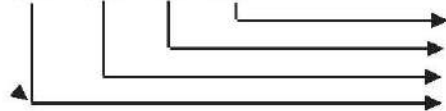
Ø40----Ø200 (TCHS)

### Sipariş nasıl verilir ? / How to Order ?

Model Silindir Çapı Strok / Model Clinder Diameter Stroke

THS 063 160

THS - 063 - 160 - EB



Yardımcı ekipman / Auxiliary equipment  
Strok / Stroke  
Silindir çapı / Cylinder diameter  
Model / Model

# HİDROLİK SİLİNDİR GRUBU

## TEKNİK ÖZELLİKLER

Çalışma Ortamı	: Hidrolik yağ
Çalışma sıcaklığı	: -20 / +80°C
Çalışma basıncı max.	: 160 Bar
Strok hatası	: ±0.3 mm
Hareket tip	: Çift etkili
Mil	: CK-45 sert krom kaplı
Boru	: ST-52 honlanmış
Sızdırmazlık	: Poliüreten+NBR

## TECNICAL PROPERTIES

Operating environment	: Hydraulic oil
Operating temperature	: -20 / +80°C
Operating pressure max.	: 160 Bar
Stroke error	: ±0.3 mm
Action type	: Double action
Rod	: CK-45 strong chrome covering
Pipe	: ST-52
Seals (Leak-proof)	: Polyurethane+ NBR

## İSTEĞE BAĞLI ÖZELLİKLER

Aşırı sıcak ortamlar için özel

Tek etkili (yay dönüşlü)

Mil ölçüsü değişebilir

## CHANGEABLE PROPERTIES

Special cylinder for extremely hot environment

Single acting (Spring returned) cylinder

Changeable rod dimensions

İTME KUVVETİ (daN)								
Ø	20 bar	40 bar	60 bar	80 bar	100 bar	120 bar	140 bar	160 bar
40	251	502	753	1004	1256	1507	1758	2009
50	392	785	1177	1570	1962	2355	2747	3140
63	623	1248	1859	2492	3115	3738	4361	4985
80	1004	2009	3014	4019	5024	6028	7033	8038
100	1570	3140	4710	6280	7850	9420	10990	12560
125	2453	4906	7359	9812	12265	14718	17171	19625
160	4019	8038	12057	16076	20096	24115	28134	32153
200	6280	12564	18840	25120	31400	37680	43960	50240

## SİLİNDİR MODELLERİ

THS	: Hidrolik silindir
TCHS	: Cetop hidrolik silindir
TÖHS	: Özel hidrolik silindir

## CYLINDER MODELS

THS	: Hydraulic cylinder
TCHS	: Cetop hydraulic cylinder
TÖHS	: Special hydraulic cylinder

## STANDART BORU ÇAPLARI

Ø40	Ø63	Ø100	Ø160
Ø50	Ø80	Ø125	Ø200

## STANDARD PIPE DIAMETER

Ø40	Ø63	Ø100	Ø160
Ø50	Ø80	Ø125	Ø200

## STANDART STROKLAR

50	100	160	200	250
----	-----	-----	-----	-----

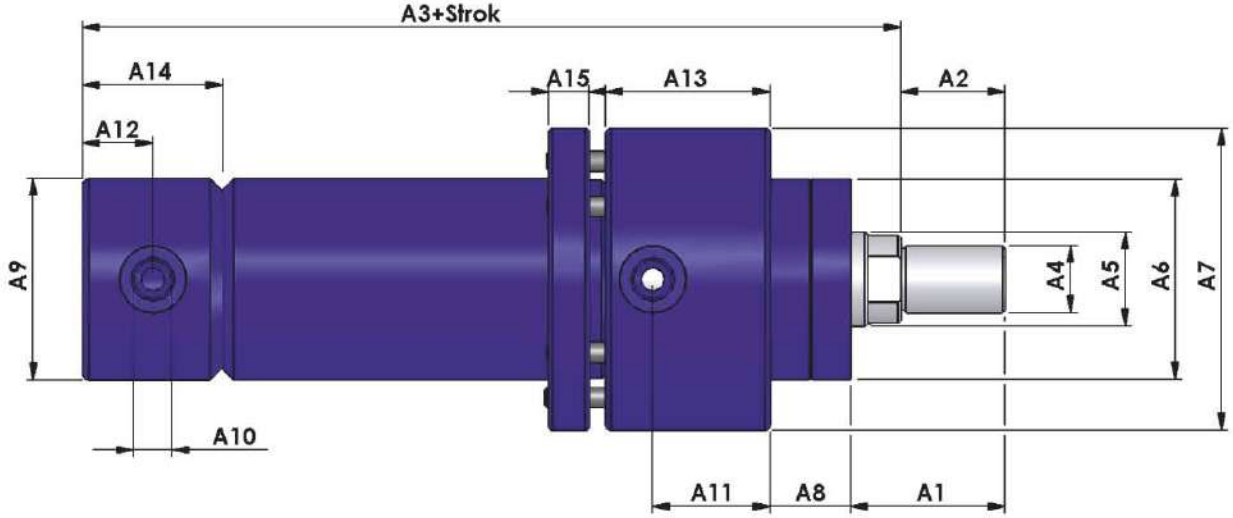
## STANDARD STROKES

50	100	160	200	250
----	-----	-----	-----	-----

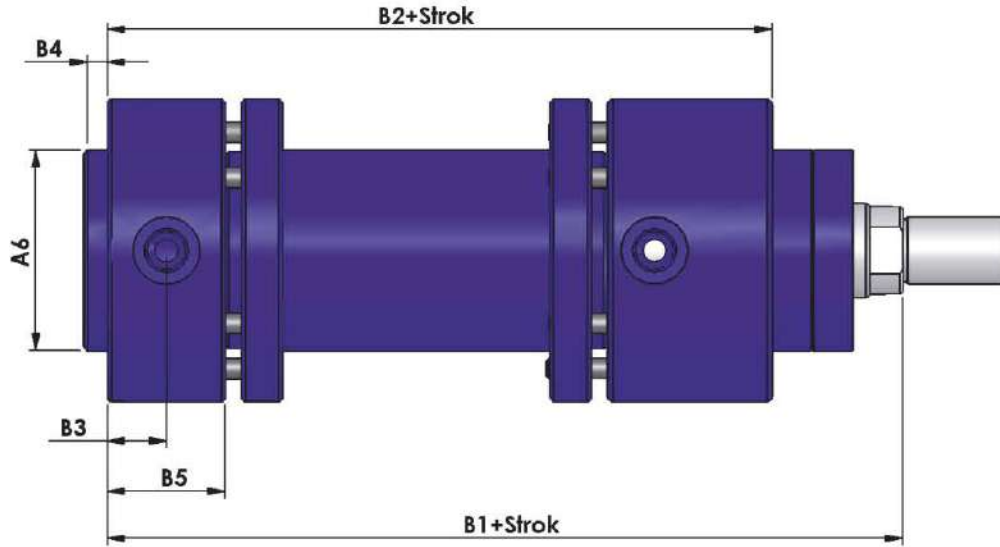


## HİDROLİK SİLİNDİR GRUBU

### HİDROLİK SİLİNDİR / HYDRAULIC CYLINDER



### CETOP TİPİ HİDROLİK SİLİNDİR / CETOP TYPE HYDRAULIC CYLINDER



Ø	A1	A2	A3	A4	A5	A6	A7	A8	A9	A10	A11	A12	A13	A14	A15	B1	B2	B3	B4	B5
40	35	22	160	M16X1,5	22	50	80	20	50	1/4	31	15	42	30	12	155	122	11,5	7	23
50	46	31	194	M20X1,5	28	60	95	24	60	1/4	35	21	49	42	12	187	148	17,5	7	35
63	55	39	208	M27X2	36	70	125	24	75	3/8	41	22,5	59	45	15	201	161	19	7	38
80	65	47	235	M33X2	45	85	130	30	95	3/8	41	29	68	51	18	228	180	22	7	44
100	80	60	244	M42X2	56	109	160	30	115	1/2	47	26,5	73	53	20	237	187	23	7	46
125	90	67	279	M48X2	70	130	195	37	145	1/2	48	30	83	60	25	272	212	26,5	7	53
160	110	85	310	M64X2	90	160	235	40	180	3/4	60	33,5	90	67	28	303	238	30	7	60
200	115	95	350	M80X3	110	200	295	45	230	3/4	80	37,5	110	75	33	343	278	34	7	68