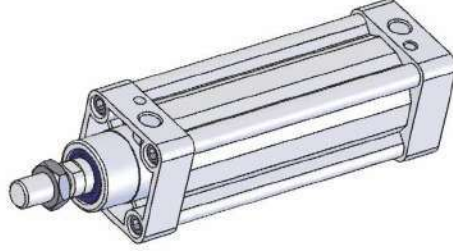


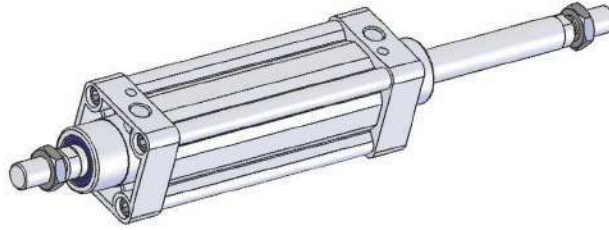
CETOP RP 43 P

ALÜMİNYUM GÖVDE SİLİNDİR GRUBU
ALUMINIUM BODY CYLINDER GROUP



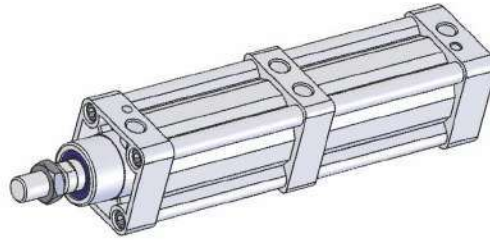
TEKMAK ALÜMİNYUM SİLİNDİR
TEKMAK MANYETİK ALÜMİNYUM SİLİNDİR
TEKMAK YASTIKLI ALÜMİNYUM SİLİNDİR
TEKMAK YASTIKLI MANYETİK ALÜMİNYUM SİLİNDİR

Ø32--Ø100 (TAS)
Ø32--Ø100 (TMAS)
Ø32--Ø100 (TYAS)
Ø32--Ø100 (TYMAS)



TEKMAK ÇİFT MİLLİ ALÜMİNYUM SİLİNDİR
TEKMAK ÇİFT MİLLİ MANYETİK ALÜMİNYUM SİLİNDİR
TEKMAK ÇİFT MİLLİ YASTIKLI ALÜMİNYUM SİLİNDİR
TEKMAK Ç.MİLLİ YASTIKLI MANYETİK ALÜMİNYUM SİLİNDİR

Ø32--Ø100 (TCAS)
Ø32--Ø100 (TCMAS)
Ø32--Ø100 (TCYAS)
Ø32--Ø100 (TCYMAS)



TEKMAK TANDEM ALÜMİNYUM SİLİNDİR
TEKMAK TANDEM YASTIKLI ALÜMİNYUM SİLİNDİR

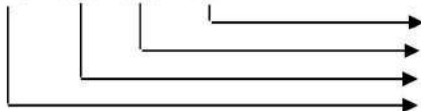
Ø32--Ø100 (TTAS)
Ø32--Ø100 (TTYAS)

Sipariş nasıl verilir ? / How to Order ?

Model Silindir Çapı Strok / Model Cylinder Diameter Strok

TAS 080 050 HY

TAS - 080 - 050 - HY



Yardımcı ekipman / Auxiliary equipment
Strok / Stroke
Silindir çapı / Cylinder diameter

CETOP RP 43 P

TEKNİK ÖZELLİKLER

Çalışma Ortamı	: Filtrelenmiş sıkıştırılmış hava
Çalışma sıcaklığı	: -20 / +70°C
Çalışma basıncı min.	: 0.1 Mpa-Tek etkili:0.3 Mpa
Çalışma basıncı max.	: 1.2 Mpa
Uygulanabilir hız	: 500 mm/s
Yağlama	: Şardlandırıcı yağı
Strok hatası	: ±0.3 mm
Hareket tipi	: Çift etkili
Mil	: CK-45 sert krom kaplı
Boru	: ALMGSl05 Extrüzyon
Sızdırmazlık	: Poliüreten+NBR
Manyetik siviç	: CS 32B - CS 50B - CS 80

TECNICAL PROPERTIES

Working enviroment	: Filtter and compresure air
Operating temperature	: -20 / +70°C
Working pressure min.	: 0.1 Mpa-Single action:0.3 Mpa
Working pressure max.	: 1.2 Mpa
Applicable speed	: 500 mm/s
Lubrication	: 10 number naturel FRL oil
Stroke error	: ±0.3 mm
Action type	: Double action
Rod	: CK-45 strong chorome covering
Pipe	: ALMGSl05
Seals	: Polyurethane+ NBR
Magnet switch	: CS 32B - CS 50B - CS 80B

İSTEĞE BAĞLI ÖZELLİKLER

Aşırı sıcak ortamlar için özel
Tek etkili (yay dönüşlü)
Strok ayarlı
Mil ölçüsü değişebilir
Silindir mili paslanmaz olarak üretilebilir

CHANGEABLE PROPERTIES

Special cylinder for extremly hot environment
Single acting (Spring returned) cylinder
Setting stroke cylinder
Chanceable rod dimensions
Stainless rod possibility

SİLİNDİR MODELLERİ

TAS	: Alüminyum silindir
TYAS	: Yastıklı alüminyum silindir
TMAS	: Manyetik alüminyum silindir
TYMAS	: Yastıklı manyetik alüminyum silindir
TCAS	: Çift milli alüminyum silindir
TCYAS	: Çift milli yastıklı alüminyum silindir
TCMAS	: Çift milli manyetik alüminyum silindir
TCYMAS	: Çift milli yastıklı manyetik alüminyum silindir
TTAS	: Tandem alüminyum silindir
TTYAS	: Tandem yastıklı alüminyum silindir
TÖAS	: Özel alüminyum silindir

CYLINDER MODELS

TAS	: Aliminum cylinder
TYAS	: Cushoin aliminum cylinder
TMAS	: Magnet aliminum body cylinder
TYMAS	: Cushoin magnet aliminum body cylinder
TCAS	: Double rod aliminum cylinder
TCYAS	: Double rod cushoin aliminum cylinder
TCMAS	: Double rod magnet aliminum body cylinder
TCYMAS	: Double rod cushoin magnet aliminum body cylinder
TTAS	: Tandem aliminum cylinder
TTYAS	: Tandem cushoin aliminum cylinder
TOAS	: Spacial aliminum cylinder

STANDART BORU ÇAPLARI

Ø32	Ø50	Ø80	Ø125
Ø40	Ø63	Ø100	

STANDARD PIPE DIAMETER

Ø32	Ø50	Ø80	Ø125
Ø40	Ø63	Ø100	

STANDART STROKLAR

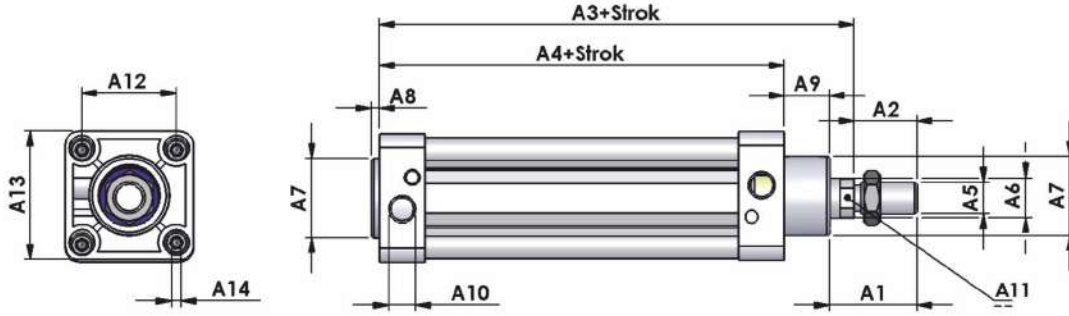
50	100	160	200	250
----	-----	-----	-----	-----

STANDARD STROKES

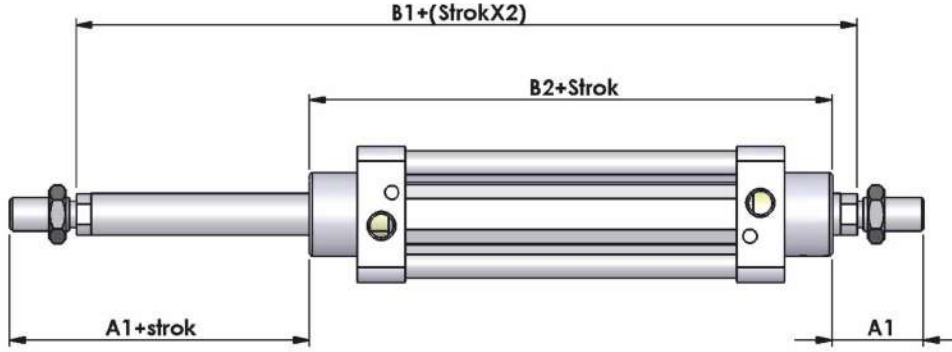
50	100	160	200	250
----	-----	-----	-----	-----

CETOP RP 43 P

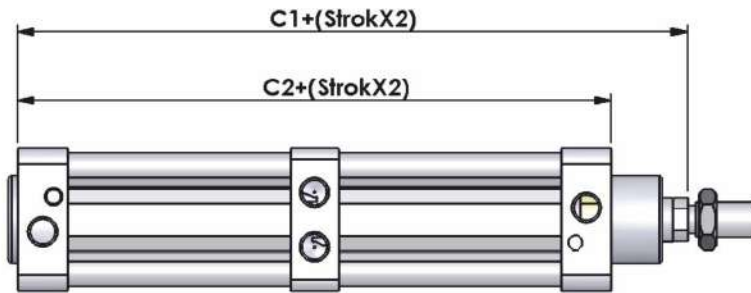
ALÜMİNYUM SİLİNDİR / ALUMINIUM CYLINDER



ÇİFT MİLLİ ALÜMİNYUM SİLİNDİR / DOUBLE ROD ALUMINIUM CYLINDER



TANDEM ALÜMİNYUM SİLİNDİR / TANDEM ALUMINIUM CYLINDER



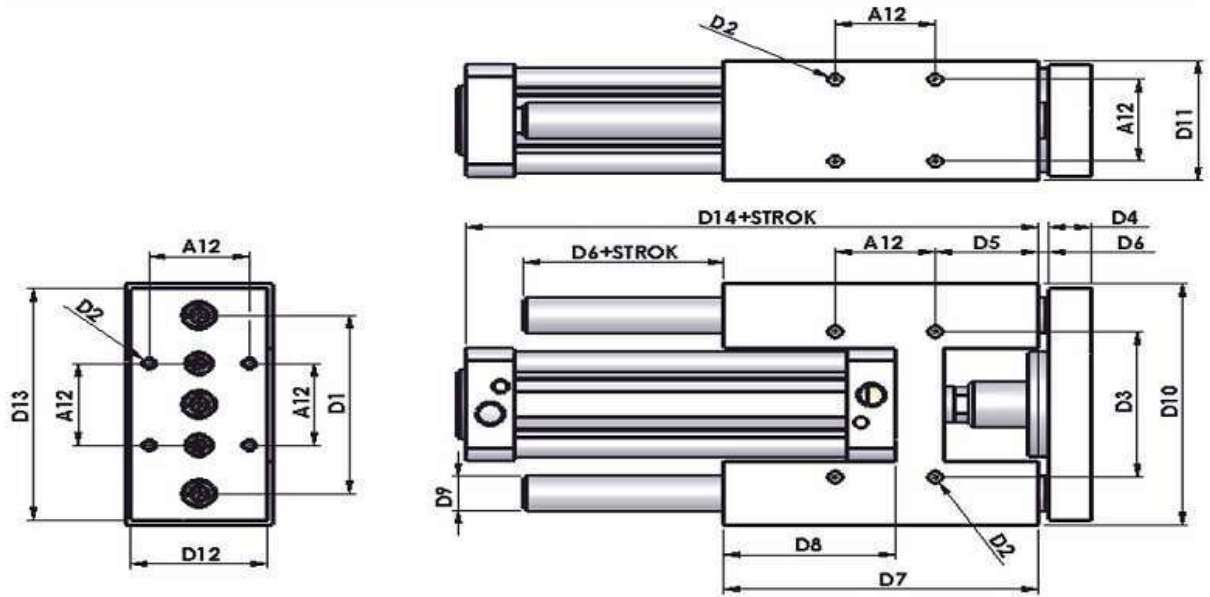
Ø	A1	A2	A3	A4	A5	A6	A7	A8	A9	A10	A11	A12	A13	A14	B1	B2	C1	C2
32	30	23	115.5	92	M10X1,25	12	30	3	16	1/8	10	32.5	45	M5	138.5	124.5	168	145
40	34	24	134	105	M12X1,25	16	35	4	19	1/4	14	38	54	M5	159.5	141.5	195.5	166.5
50	44	32	140	105	M16X1,5	20	40	5	23	1/4	17	46.5	65	M6	175	151	207	172
63	44	32	147	109	M16X1,5	20	42	6	26	3/8	17	56.5	80	M6	185	161	216	176.5
80	54	42	166.5	120.5	M20X1,5	25	47	6	34	3/8	22	69.6	96	M8	212.5	188.5	234	188
100	54	42	181.5	129.5	M20X1,5	25	52	7	40	1/2	22	93.5	127	M8	233.5	209.5	260.5	208.5
125	73	54	205.5	138.5	M24X2	32	60	7	48	1/2	27	110	140	M12	272.5	234.5	327	260

NOT:Ø125 lık Silindirin A5 ölçüsü İsteğe Göre M27X2 Yapılmaktadır.

NOTE:Ø125-A5 is optional. It can produce M27x2.

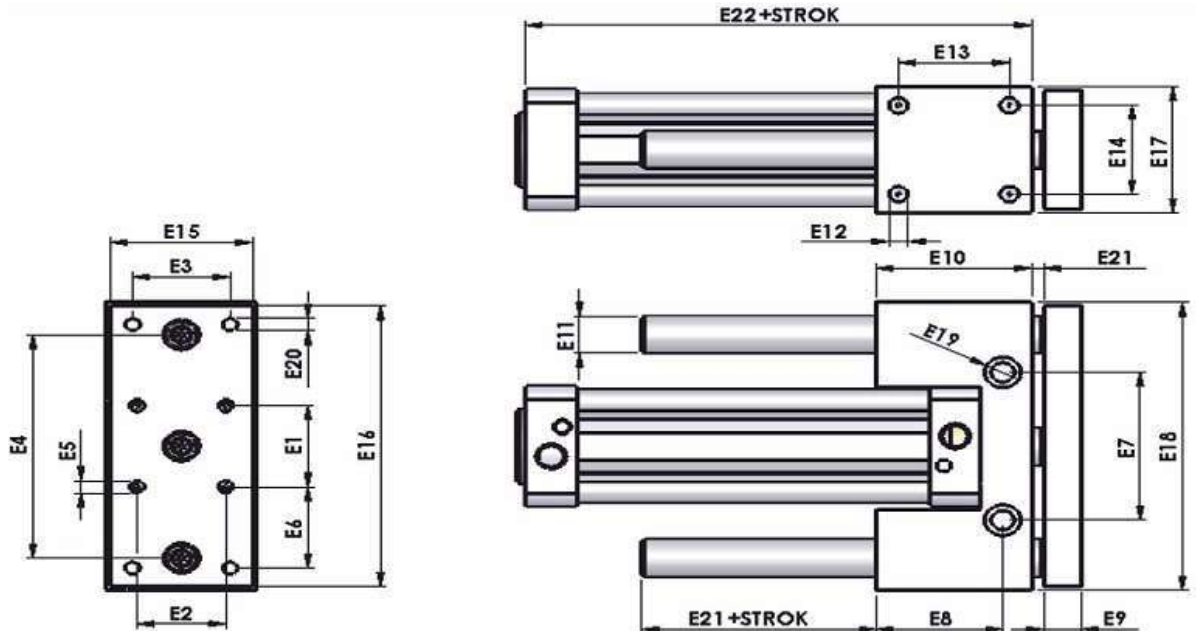
CETOP RP 43 P

H YATAKLI ALÜMİNYUM SİLİNDİR (HY) / H GUIDE ALUMINIUM CYLINDER (HG)



Ø	D1	D2	D3	D4	D5	D6	D7	D8	D9	D10	D11	D12	D13	D14
32	74	M6	61	15	34	5	115	67	12	99	50	45	95	140.5
40	87	M6	69	15	43	5	134	77	16	119	56	50	115	160.5
50	104	M8	85	20	49	5	150	82	20	141	70	65	135	173
63	119	M8	100	20	55	5	170	96	20	156	80	75	150	186

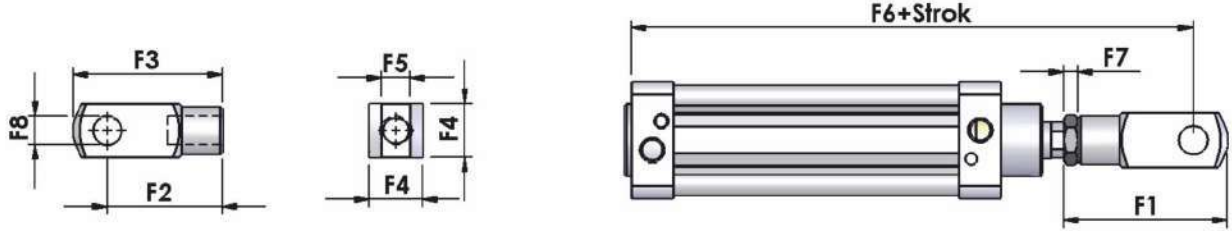
U YATAKLI ALÜMİNYUM SİLİNDİR (UY) / U GUIDE ALUMINIUM CYLINDER (SSC)



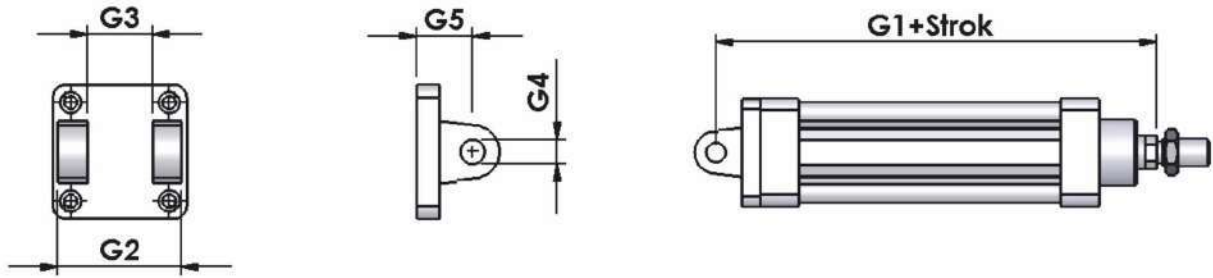
Ø	E1	E2	E3	E4	E5	E6	E7	E8	E9	E10	E11	E12	E13	E14	E15	E16	E17	E18	E19	E20	E21	E22
32	40	22	30	90	M8	32	56	44	15	55	12	M8	35	32	40.5	118	47	120	Ø13.5X8.5-Ø8.5	M6	5	109.5
40	40	32	32	96	M8	32	64	46	15	58	16	M8	38	40	49	122	55	124	Ø13.5X8.5-Ø8.5	M8	5	123.5
50	44	44	44	121	M8	44	80	57	17	70	20	M10	50	48	64	152	68	156	Ø16.5X10.5-Ø10.5	M8	5	128
63	46	58	58	130	M8	47	88	62	17	75	20	M10	55	60	78	160	80	164	Ø16.5X10.5-Ø10.5	M8	5	138

CETOP RP 43 P

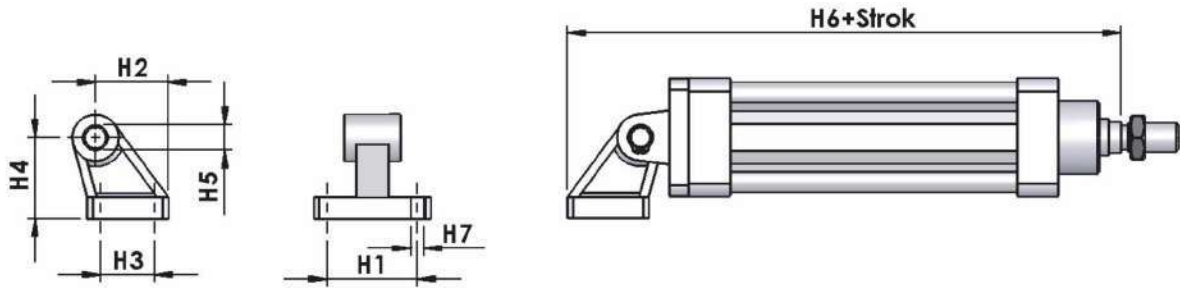
ÇATAL BAĞLANTI (ÇB) / ROD CLEVIS (RC)



EKLEM BAĞLANTI (EB) / SWIVEL FLANGE (SF)



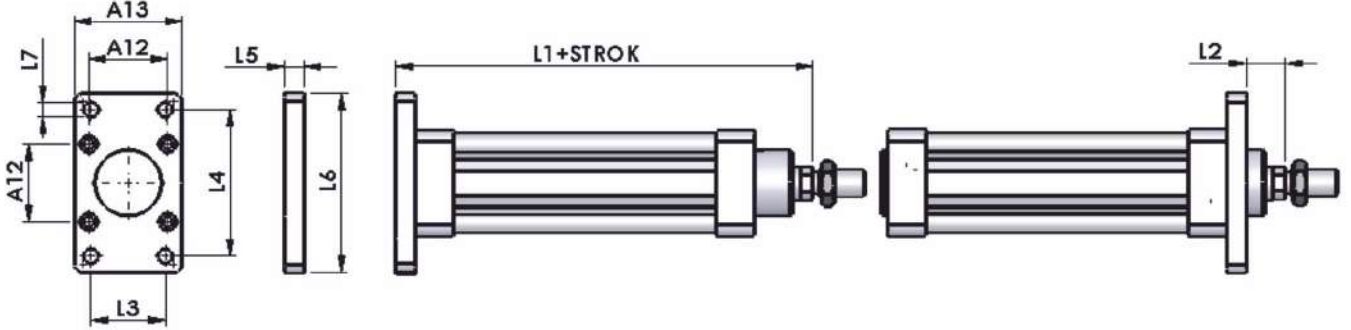
EKLEM YER BAĞLANTI (EYB) / SWIVEL FLANGE WITH FOOT MOUNTING (SFWFM)



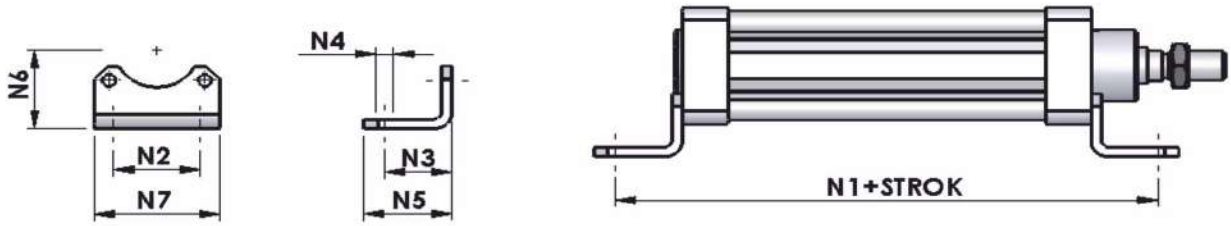
Ø	F1	F2	F3	F4	F5	F6	F7	F8	G1	G2	G3	G4	G5	H1	H2	H3	H4	H5	H6	H7
32	59	41	53	20	10	162.5	6	10	137.5	45	26	10	22	38	27.5	18	32	10	165	5.5
40	70	47	63	24	12	186.5	7	12	157	54	27.5	12	24.5	41	30.5	22	36	12	187.5	6
50	91	62	83	30	16	210.5	8	16	167.5	65	31.5	12	27	50	40.5	30	45	12	208	7
63	91	62	83	30	16	217	8	16	181.5	75	39	16	35	52	44.5	35	50	16	226	7
80	113.5	80	105	40	20	255	8.5	20	204.5	96	50	16	38	66	57	40	63	16	261.5	9
100	113.5	80	105	40	20	270	8.5	20	225.5	115	60	20	41	76	65	50	71	20	289.5	9
125	145	100	132	50	25	325	13	25	267.5	138	71	25	55.5	93	85	60	90	25	652.5	11

CETOP RP 43 P

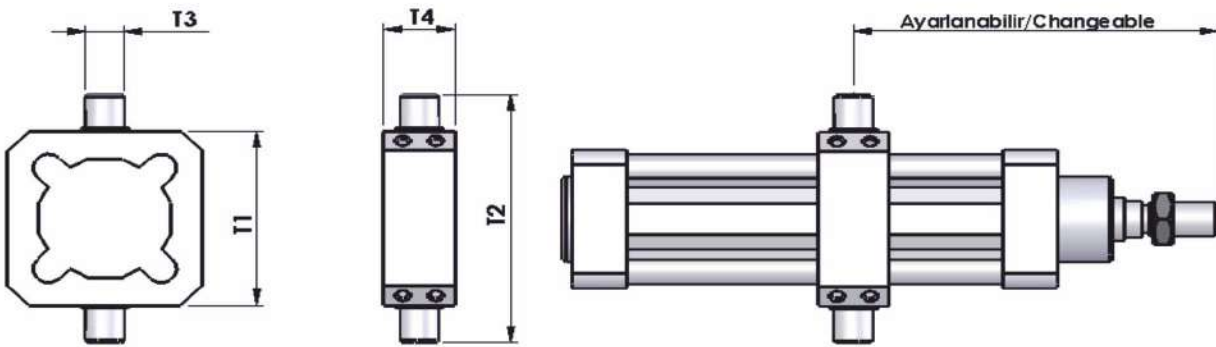
FLANŞ BAĞLANTI (FB) / FLANGE MOUNTING (MF)



AYAK BAĞLANTI (AB) / FOOT MOUNTING (FM)

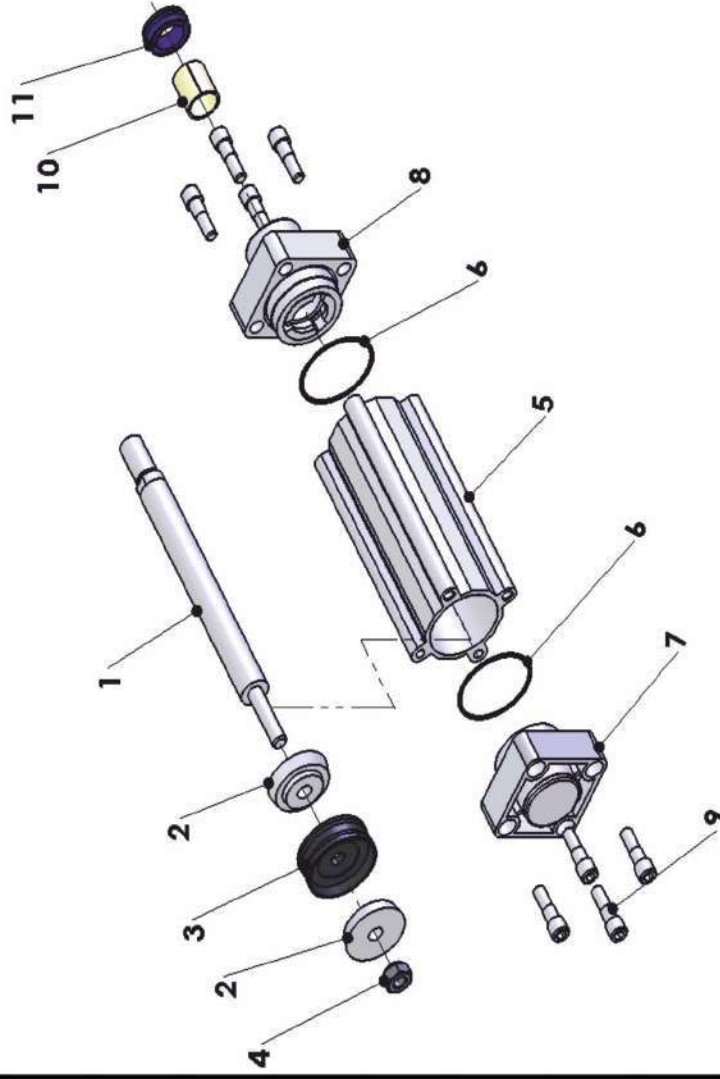


ORTA EKLEM BAĞLANTI (OEB) / CENTRAL TURINNION MOUNTING (FM)



Ø	L1	L2	L3	L4	L5	L6	L7	N1	N2	N3	N4	N5	N6	N7	T1	T2	T3	T4
32	125	13	32	64	10	77	7	138	32	23	7	33	31	45	61	87	12	25
40	142.5	20	36	72	10	90	9	155.5	36	27	9	36	34	55	75	105	16	25
50	152.5	23	45	90	12	110	9	172.5	43.5	33.5	9	44	51	63	85	117	16	30
63	162	23	50	100	15	125	9	176	50	33.5	9	50	51	80	103	141	20	38
80	184.5	28	63	126	18	154	12	194.5	63	37	12	56	63	96	124	168	20	40
100	199.5	34	75	150	18	186	14	210.5	75	41	14	56	73	123	145	195	25	46
125	232	26	90	180	20	210	16	244	90	50	16	69	105	140	164	210	25	55

CETOP RP 43 P ALÜMİNYUM GÖVDE SİLİNDİR GRUBU / ALUMINIUM BODY CYLINDER GROUP



Numara NR.	Parça Adı Name of the Parts	Malzemesi Material
1	Mil Rod	CK 45 Sert Krom Kaplı CK45 Hard Chrome Plated
2	Piston Keçe Pulu Piston Seal Washer	Alüminyum Aluminium
3	Piston Keçesi Piston Seal	NBR
4	Fiberli Somun Fiber Nut	Q St 36/2
5	Silindir Borusu Cylinder Tube	Anodized Alüminyum Anodized Aluminium
6	O-Ring	NBR
7	Arka Kafa Back Cover	Alüminyum Aluminium
8	Ön Kafa Head Cover	Alüminyum Aluminium
9	Cıvata Bolt	Galvanizli Çelik Galvanized Steel
10	Sinter Burç Sinter Bushing	Sinter Bronz Sinter Bronze
11	Boğaz Keçesi Rod Seal	Poliüretan 90 Shore A PU 90 Shore A