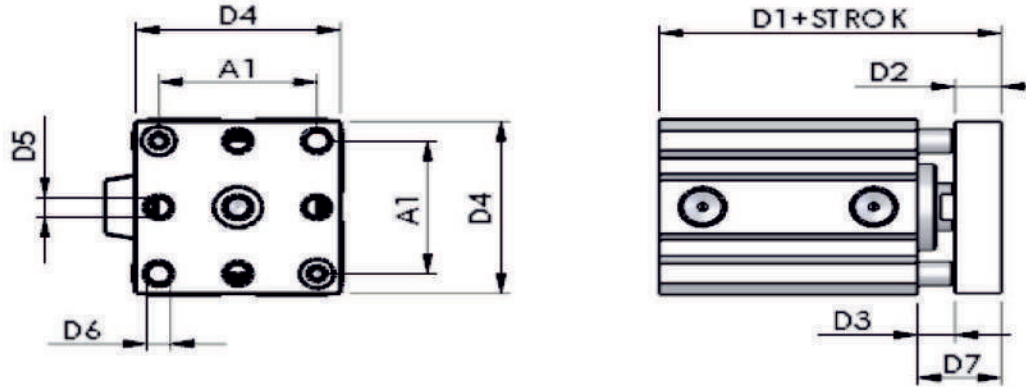


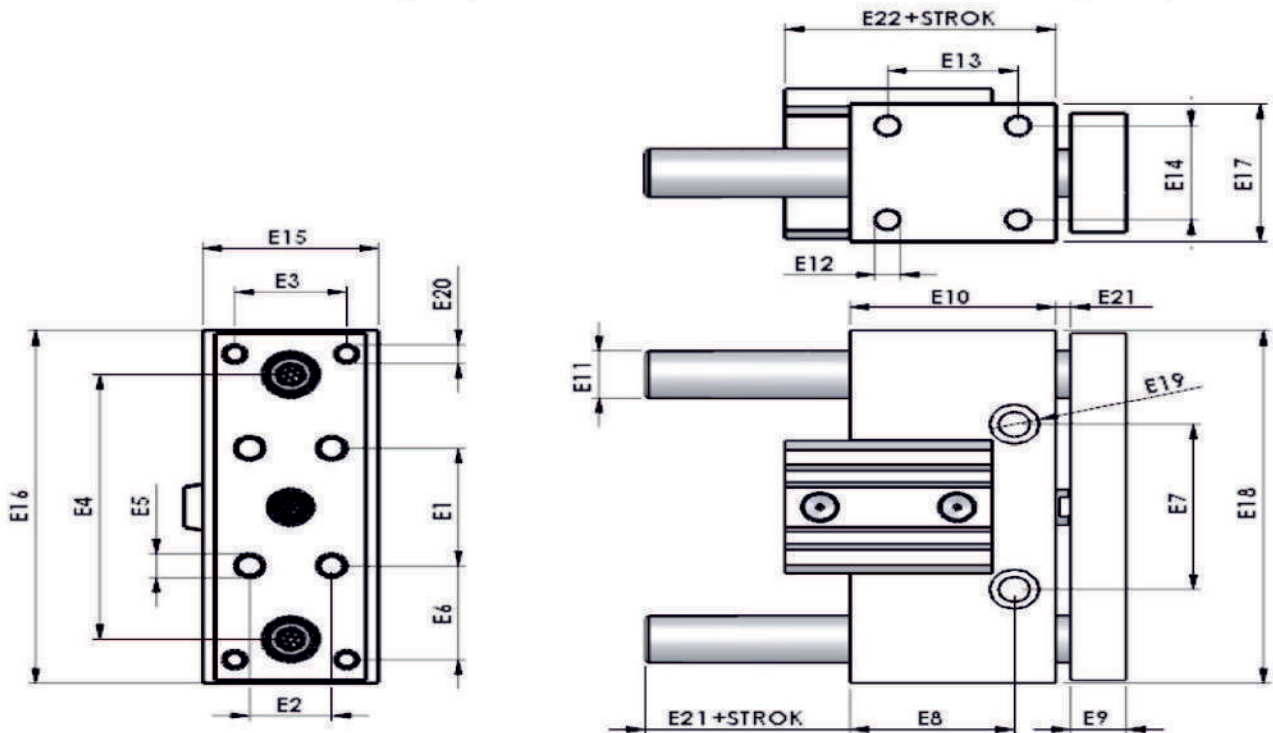
## JİG SİLİNDİR GRUBU

TABLALI JİG SİLİNDİR ( TJS ) / SLIDE BLOCK SHORT STROKE CYLINDER ( SBS )



Ø	D1	D2	D3	D4	D5	D6	D7
25	36,5	8	6,5	40	M6	6,5	14,5
32	43,5	10	8	44	M6	6,5	18
40	46,5	12	8	52	M8	9	20
50	52,5	14	9,5	62	M8	9	23,5
63	57,3	14	9,5	75	M8	9	23,5
80	67,5	16	10,5	94	M12	13	26,5
100	71,5	16	10	114	M12	13	26

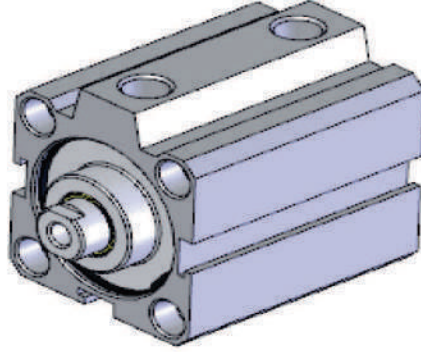
U YATAKLI JİG SİLİNDİR ( UY ) / U GUIDE SHORT STROKE CYLINDER ( SSS )



Ø	E1	E2	E3	E4	E5	E6	E7	E8	E9	E10	E11	E12	E13	E14	E15	E16	E17	E18	E19	E20	E21	E22
32	40	22	30	90	M8	32	56	44	15	55	16	M8	35	32	40,5	118	47	120	Ø13x8.5-Ø8.5	M6	5	42,5
40	40	32	32	96	M8	32	64	46	15	58	16	M8	38	40	49	122	55	124	Ø13x8.5-Ø8.5	M8	5	46,5
50	44	44	44	121	M8	44	80	57	17	70	20	M10	50	48	64	152	68	156	Ø16.5x8.5-Ø10.5	M8	5	52
63	46	58	58	130	M8	47	88	62	17	75	20	M10	55	60	78	160	80	164	Ø16.5x8.5-Ø10.5	M8	5	59,8

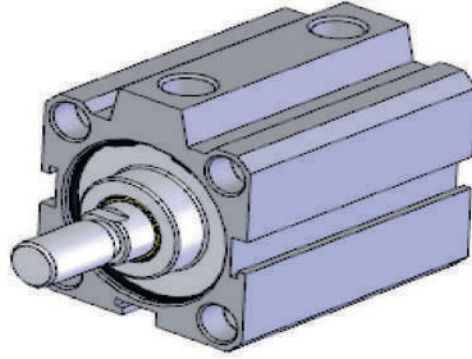
## JİG SİLİNDİR GRUBU

### SHORT STROKE CYLINDER GROUP



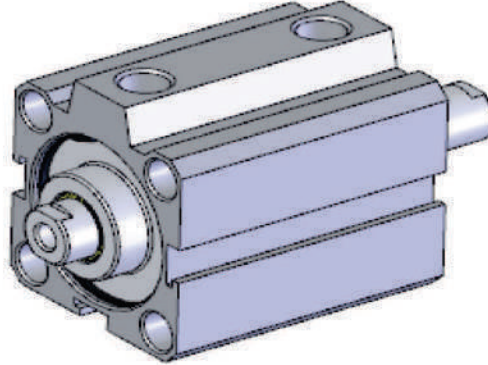
TEKMAK JİG SİLİNDİR  
TEKMAK MANYETİK JİG SİLİNDİR

Ø12-Ø100 (TJS)  
Ø12-Ø100 (TMJS)



TEKMAK ERKEK JİG SİLİNDİR  
TEKMAK ERKEK MANYETİK JİG SİLİNDİR

Ø12-Ø100 (TEJS)  
Ø12-Ø100 (TEMJS)



TEKMAK ÇİFT MİLLİ JİG SİLİNDİR  
TEKMAK ÇİFT MİLLİ MANYETİK JİG SİLİNDİR

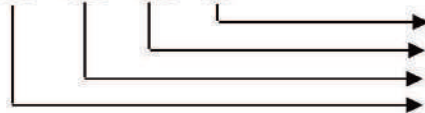
Ø12-Ø100 (TCJS)  
Ø12-Ø100 (TCMJS)

#### Sipariş nasıl verilir ? / How to Order ?

Model Silindir Çapı Strok / Model Cylinder Diameter Strok

TJS 032 025 HY

TJS - 032 - 025 - HY



Yardımcı ekipman / Auxiliary equipment  
Strok / Stroke  
Silindir çapı / Cylinder diameter  
Model / Model



## JİG SİLİNDİR GRUBU

### TEKNİK ÖZELLİKLER

Çalışma Ortamı	: Filtrelenmiş sıkıştırılmış hava
Çalışma sıcaklığı	: -20 / +70°C
Çalışma basıncı min.	: 0.1 Mpa-Tek etkili:0.3 Mpa
Çalışma basıncı max.	: 1 Mpa
Uygulanabilir hız	: 500 mm/s
Yağlama	: Şarjlandırıcı yağı
Strok hatası	: ±0.3 mm
Hareket tipi	: Çift etkili
Mil	: CK-45 sert krom kaplı
Boru	: ALMGSI05 Extrüzyon
Sızdırmazlık	: Poliüreten+NBR
Manyetik siviç	: CS 30E

### TECNICAL PROPERTIES

Operating environment	: Filter and compresure air
Operating temperature	: -20 / +70°C
Operating pressure min.	: 0.1 Mpa-Single action:0.3 Mpa
Operating pressure max.	: 1 Mpa
Applicable speed	: 500 mm/s
Lubrication	: 10 number naturel FRL oil
Stroke error	: ±0.3 mm
Action type	: Double action
Rod	: CK-45 strong chorome covering
Pipe	: ALMGSI05
Seals (Leak-proof)	: Polyurethane+ NBR
Magnet switch	: CS 30E

### İSTEĞE BAĞLI ÖZELLİKLER

Aşırı sıcak ortamlar için özel

Tek etkili (yay dönüşlü)

Strok ayarlı

Mil ölçüsü değişebilir

### CHANGEABLE PROPERTIES

Special cylinder for extremly hot environment

Single acting (Spring returned) cylinder

Stroke adjustment

Chanceable rod dimensions

### SİLİNDİR MODELLERİ

TJS	: Jig silindir
TMJS	: Manyetik jig silindir silindir
TEJS	: Erkek jig silindir
TEMJS	: Erkek manyetik jig silindir
TCJS	: Çift milli jig silindir
TCMJS	: Çift milli manyetik jig silindir
TECLS	: Erkek çift milli manyetik jig silindir
TECMJS	: Erkek çift milli manyetik jig silindir
TÖJS	: Özel jig silindir

### CYLINDER MODELS

TJS	: Short stroke cylinder
TMJS	: Magnet short stroke cylinder
TEJS	: Male short stroke cylinder
TEMJS	: Male magnet short stroke cylinder
TCJS	: Double rod short stroke cylinder
TCMJS	: Double rod magnet short stroke cylinder
TECLS	: Male double rod short stroke cylinder
TECMJS	: Male double rod magnet short stroke cylinder
TÖJS	: Special short stroke cylinder

### STANDART BORU ÇAPLARI

Ø12	Ø25	Ø50	Ø100
Ø16	Ø32	Ø63	
Ø20	Ø40	Ø80	

### STANDARD PIPE DIAMETER

Ø12	Ø25	Ø50	Ø100
Ø16	Ø32	Ø63	
Ø20	Ø40	Ø80	

### STANDART STROKLAR

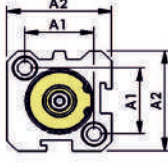
5	15	25	40
10	20	30	50

### STANDARD STROKES

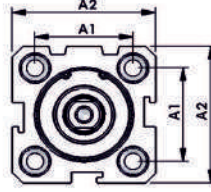
5	15	25	40
10	20	30	50

## JİG SİLİNDİR GRUBU

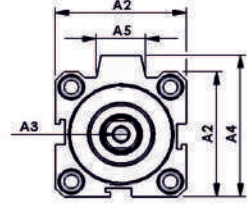
**Ø12 Ø16**



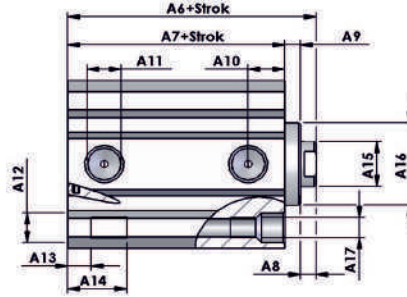
**Ø20 Ø25**



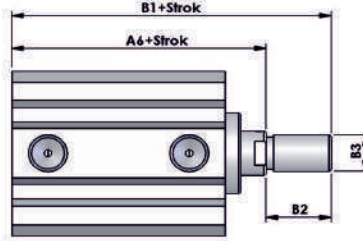
**Ø32 Ø100**



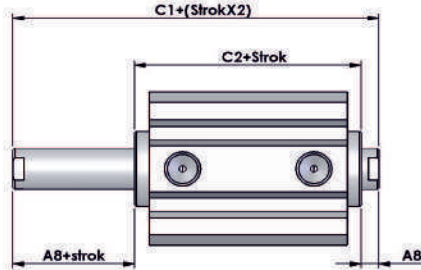
### JİG SİLİNDİR / SHORTE CYLINDER



### ERKEK JİG SİLİNDİR / MALE SHORTE CYLINDER



### ÇİFT MİLLİ JİG SİLİNDİR / DOUBLE ROD SHORTE CYLINDER



Ø	A1	A2	A3	A4	A5	A6	A7	A8	A9	A10	A11	A12	A13	A14	A15	A16	A17	B1	B2	B3	C1	C2
12	15.7	26	M3X0,5			25	20.5	4	0.5	7.6	M5	5.5	4.5	9.5	6	8.3	M5	35.5	10.5	M5	29.3	21.3
16	19.8	30	M3X0,5			26	21.5	4	0.5	8.2	M5	6.5	5	15	6	9	M5	36.5	10.5	M5	30.5	22.5
20	24	35	M4X0,7			27	21.5	4	1.5	8.1	M5	7	5	15	8	13	M5	41	14	M6	32.5	24.5
25	28	41	M5X0,8			28.5	22.2	4	2.5	8	M5	8	6	17	10	17	M6	44.5	16	M8	35	28
32	34	45	M6X1	51	17	33.5	25.5	4	4	9.3	1/8	8	6	17	12	22	M6	50.5	17	M10X1.25	41.5	33.5
40	40	53	M8X1,25	59	17	34.5	26.5	4	4	10.1	1/8	10	8	20	16	28	M8	61.5	27	M12X1.25	42.5	34.3
50	48	63	M10X1,5	71	23.5	38.5	29	4	5.5	10.5	1/4	11	8	20	20	38	M8	66.5	28	M18X1.5	48	40
63	60	76	M10X1,5	84.5	25.3	43.3	33.8	4	5.5	12.2	1/4	11	8	20	20	40	M8	71.3	28	M18X1.5	52.8	44.8
80	74	95	M14X1,5	104	30	51.5	41	5	5.5	13.5	3/8	14	10	22	25	45	M12	81.5	30	M22X1.5	61.8	51.8
100	90	115	M16X2	124	30	55.5	46	5	5	14.3	3/8	18.5	13	25	25	45	M14	85.5	30	M22X1.5	65.2	55.5

NOT= JİG SİLİNDİRLERDE MANYETİK İSTENDİĞİNDE A6,A7,B1,C1,C2, ÖLÇÜLERİ 10 mm ARTMAKTADIR.