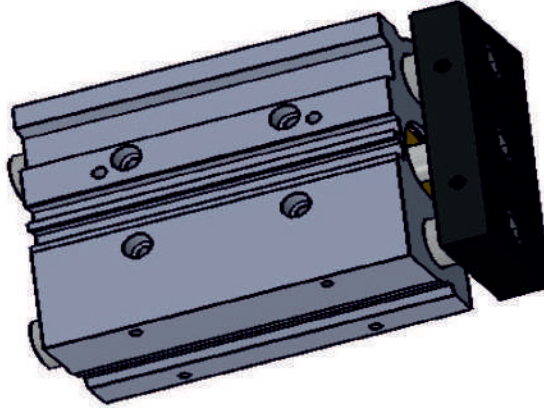


MANYETİK YATAKLI BLOK SİLİNDİR

MAGNETIC GUIDE BLOCK CYLINDER



TEKNİK ÖZELLİKLER / TECHNICAL PROPERTIES

Çalışma Ortamı / Operating Medium	Filtrelenmiş Sıkıştırılmış Hava / Filter compressed air
Çalışma Sıcaklığı / Operating Temperature	-10/+60C°
Çalışma Basıncı min / Operating pressure min.	0.1Mpa
Çalışma Basıncı max. / Operating pressure max.	1.2Mpa
Uygulanabilir Hız / Applicable speed	500-700 mm/s
Yağlama / Lubrication	Şartlandırıcı Yağı / 10 number naturel FRL oil
Strok Hatası / Stroke error	±0.3mm
Hareket Tipi / Action type	Çift etkili / Double action
Mil / Rod	CK-45 Sert Krom Kaplı / CK 45 hard chrome plated
Sızdırmazlık / Seals (Leak-proof)	Poliüretan+NBR / Polyurethane + NBR
Boru / Pipe	ALMGSI05 Extrüzyon / ALMGSI05
Manyetik Sivic / Magnet switch	SDA-25

Ø	STANDART STROKLAR
16 - 20 - 25 - 32 - 40 - 50	25 - 50 - 100 - 125 - 150

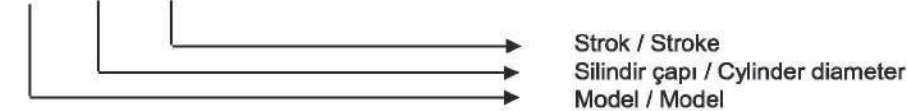
Boru çap (Bore Size)	Mil Çapı (Rod Dia.)	Etki Yönü (Action)	Piston Alanı (Piston Area) cm ²	Etki Eden Basınç Alan(Bar=Kgf/cm ²)						
				1	2	3	4	5	6	7
16	Ø 8	İtme/Push	2.01	---	4	6	8	10.1	12.1	14
		Çekme/Pull	1.51	---	3	4.5	6	7.6	9.1	10.6
20	Ø 10	İtme/Push	3.14	---	6	9	12	15	18	21
		Çekme/Pull	2.35	---	4.7	7.1	9.4	11.8	14.1	16.5
25	Ø 12	İtme/Push	4.9	---	9	14	19	24	29	34
		Çekme/Pull	3.77	---	7.5	11.3	15.1	18.9	22.6	26.3
32	Ø 16	İtme/Push	8.04	---	16	24	32	40	48	55
		Çekme/Pull	6.03	---	12.1	18.1	24.2	30.2	36.2	42.2
40	Ø 16	İtme/Push	12.56	12	25	37	50	62	75	87
		Çekme/Pull	10.55	10	21	31	42	52	63	73
50	Ø 20	İtme/Push	19.63	19	39	58	78	98	117	137
		Çekme/Pull	16.49	16	32	49	65	82	98	115

Sipariş nasıl verilir ? / How to Order ?

Model Silindir çapı Strok / Model Cylinder Diameter Stroke

TBS - 025 - 100

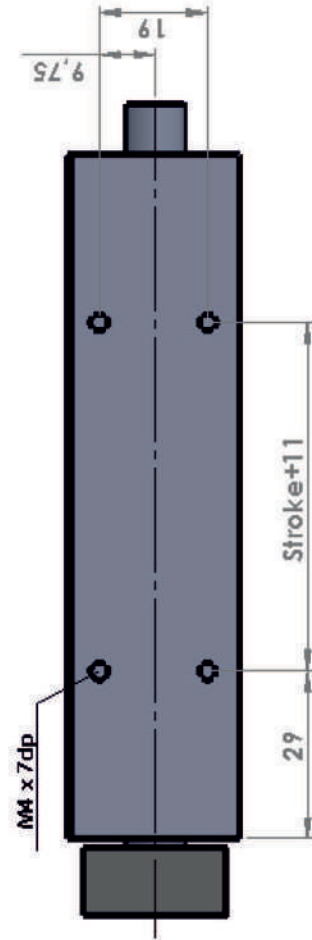
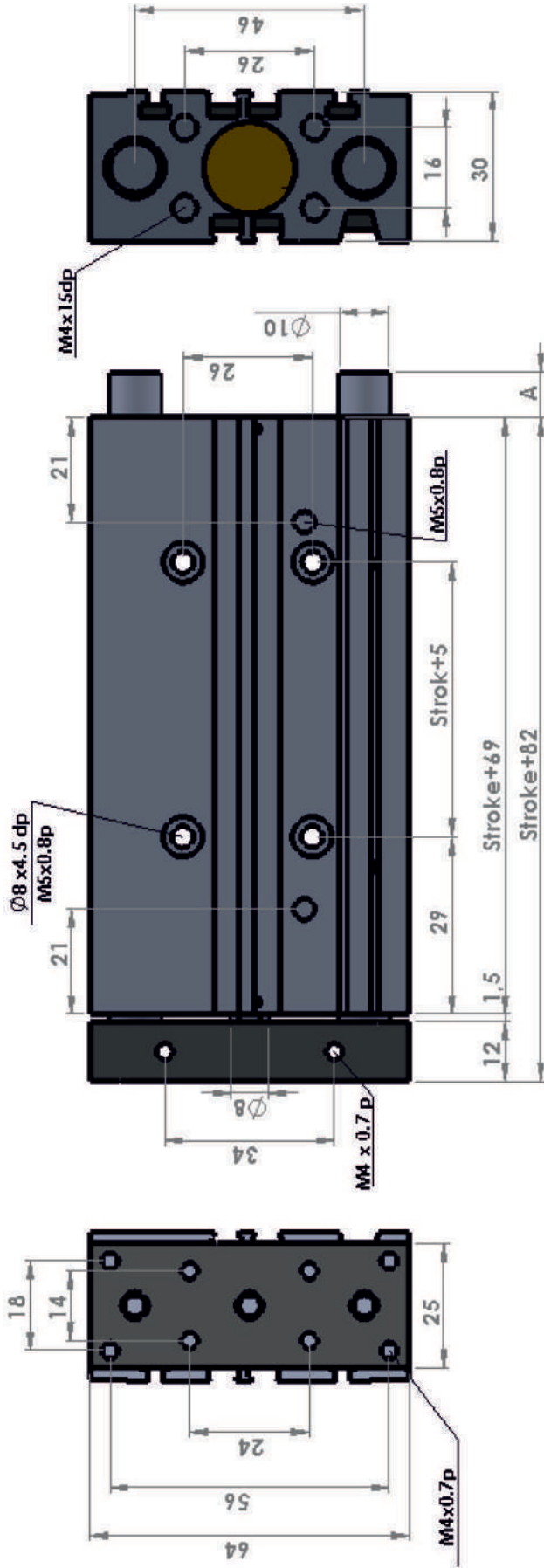
TBS - 025 - 100



MANYETİK YATAKLI BLOK SİLİNDİR

MAGNETIC GUIDE BLOCK CYLINDER

TBS Ø16

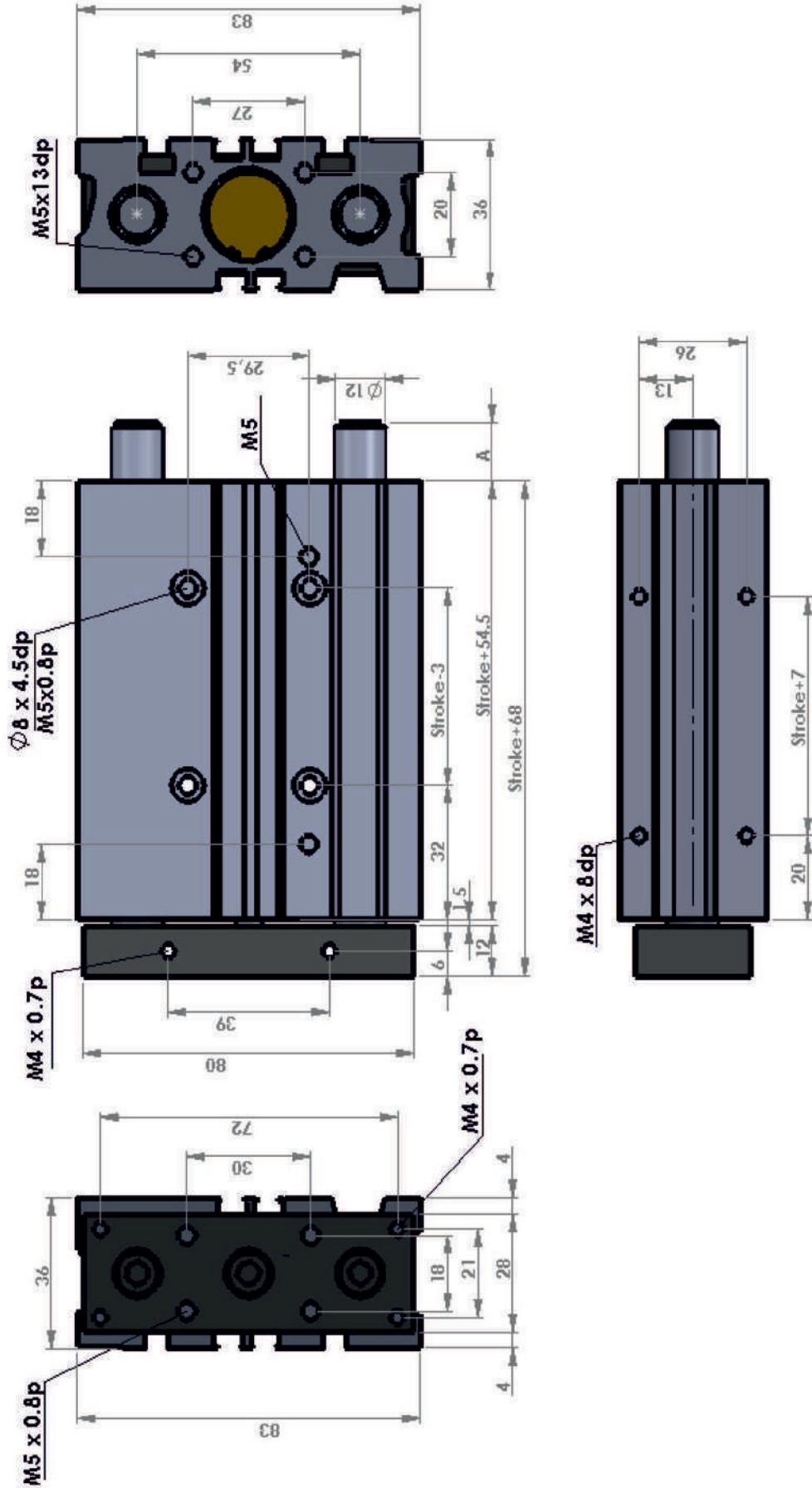


Strok (mm)	25	50	75	125	150
Symbol	0	0	11.5	11.5	11.5
A	0	0	11.5	11.5	11.5

MANYETİK YATAKLI BLOK SİLİNDİR

MAGNETIC GUIDE BLOCK CYLINDER

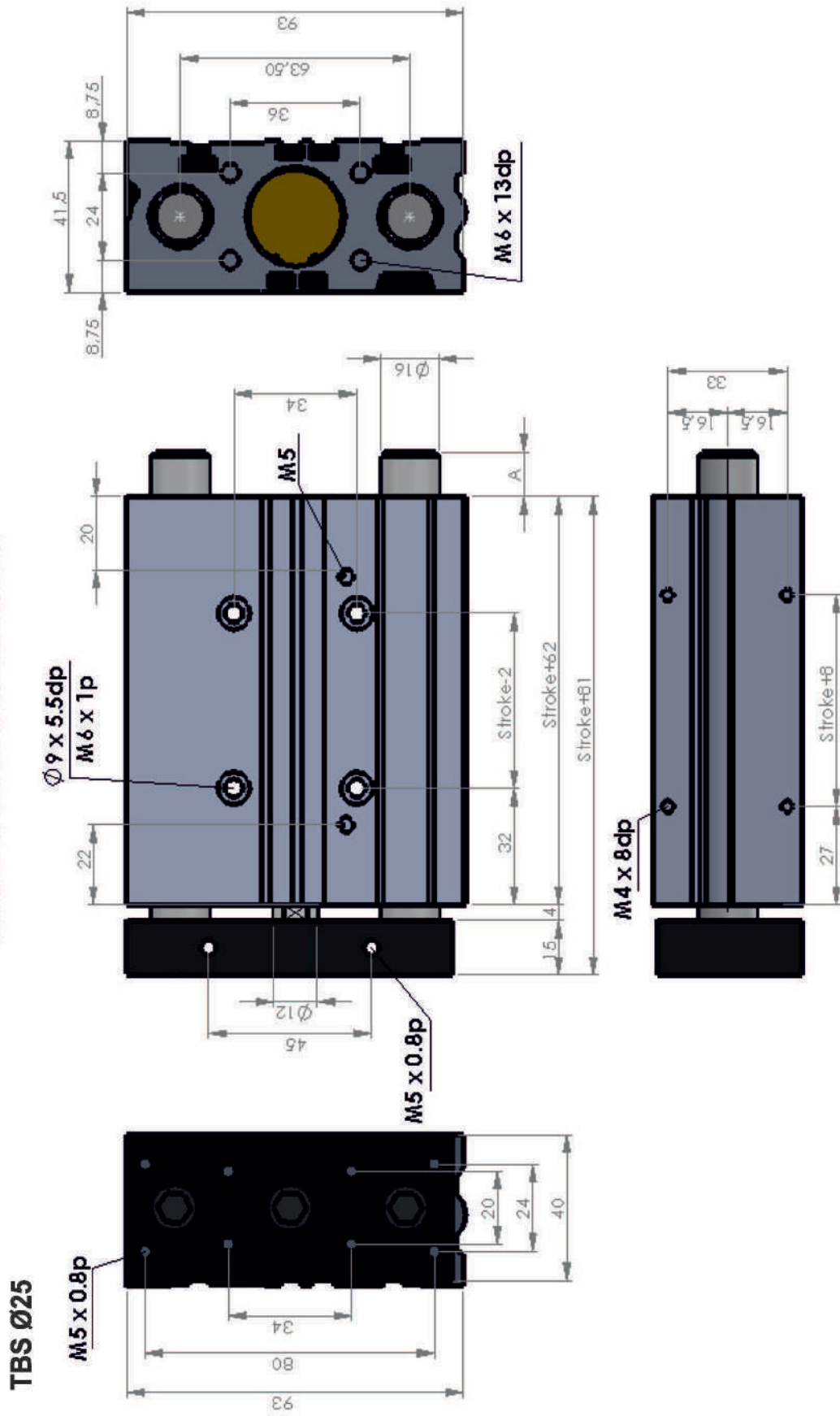
TBS Ø20



Strok (mm)	25	50	75	100	125	150
Sembol	0	0	15	15	15	15
A	0	0	15	15	15	15

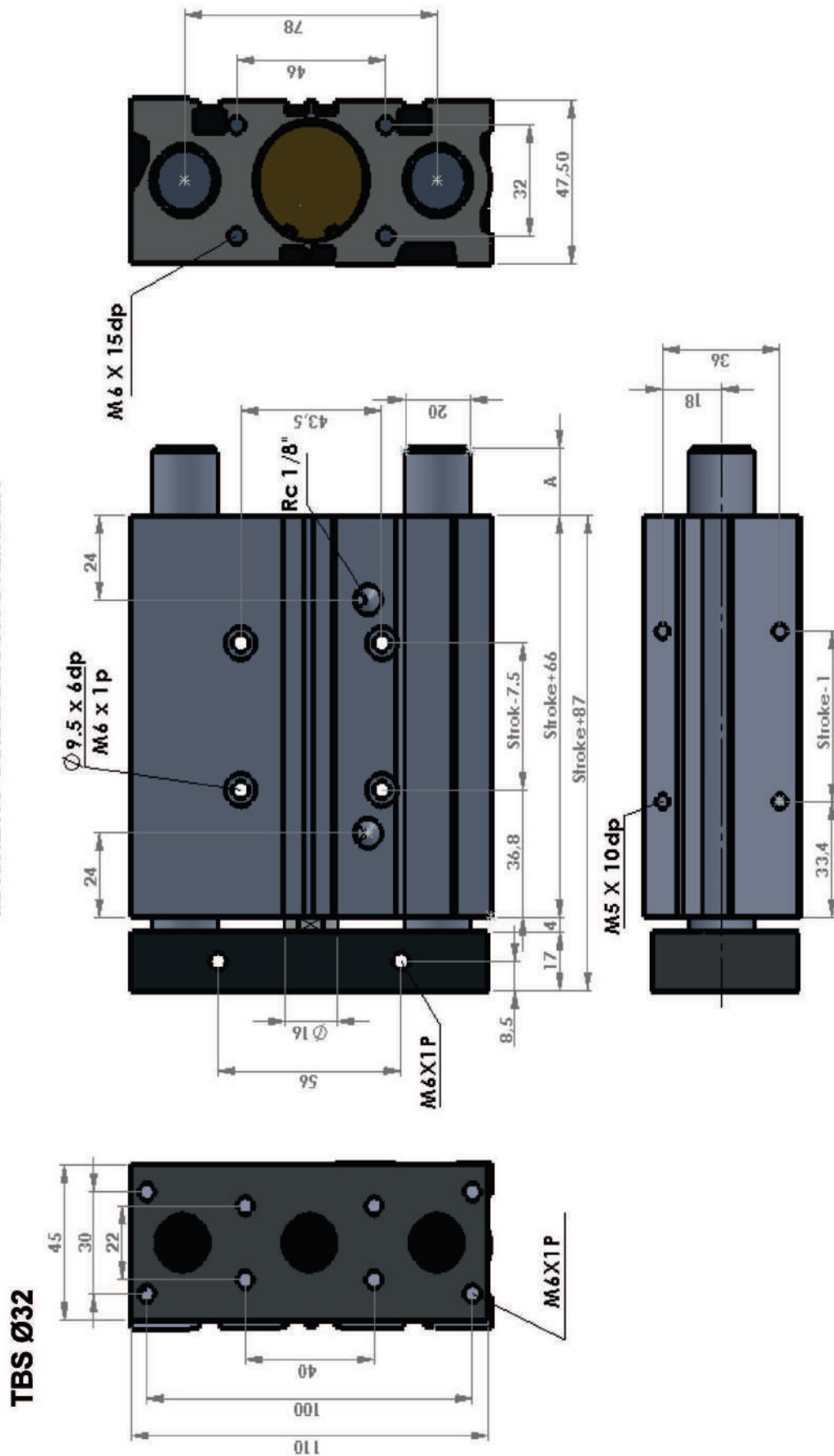
MANYETİK YATAKLI BLOK SİLİNDİR

MAGNETIC GUIDE BLOCK CYLINDER



Stroke (mm)	25	50	75	100	125	150
Sembol	0	0	11	11	11	11
A	0	0	11	11	11	11

MANYETİK YATAKLI BLOK SİLİNDİR
MAGNETIC GUIDE BLOCK CYLINDER

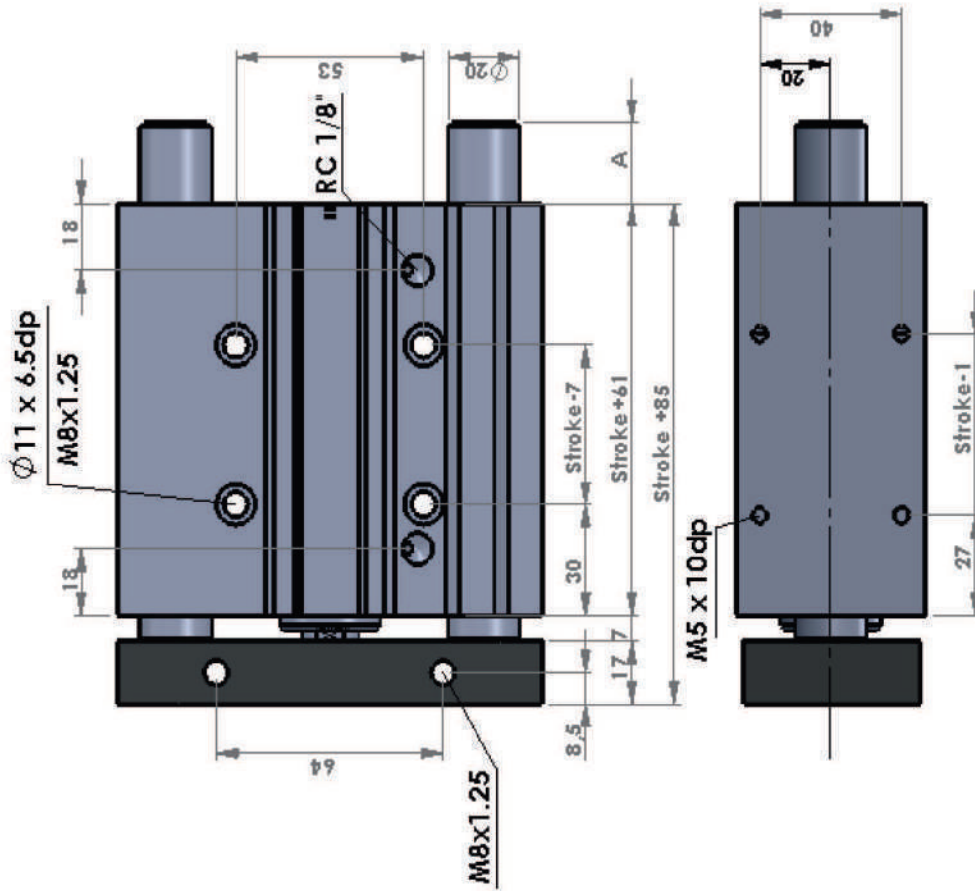
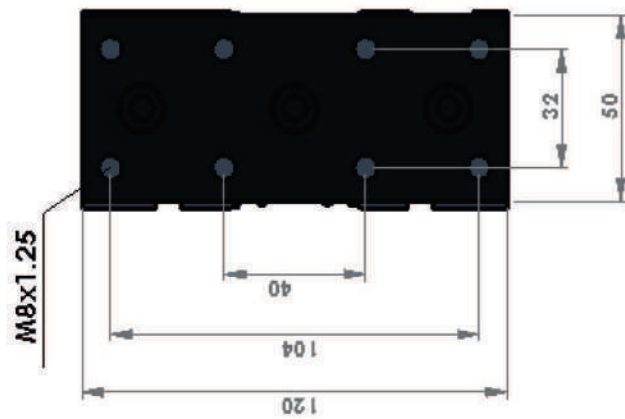


Stroke (mm)	25	50	75	100	125	150
A	0	0	34	34	34	34

MANYETİK YATAKLI BLOK SİLİNDİR

MAGNETIC GUIDE BLOCK CYLINDER

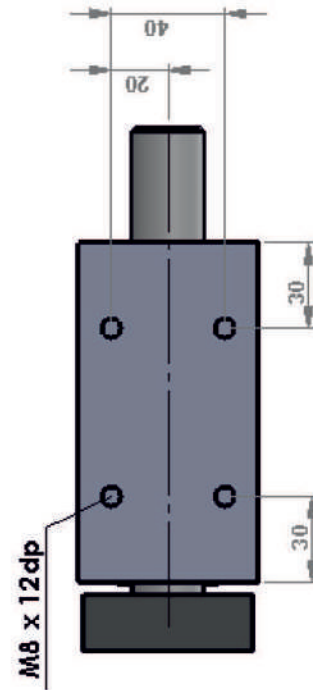
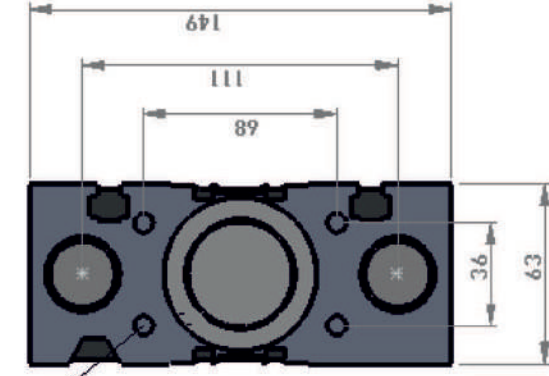
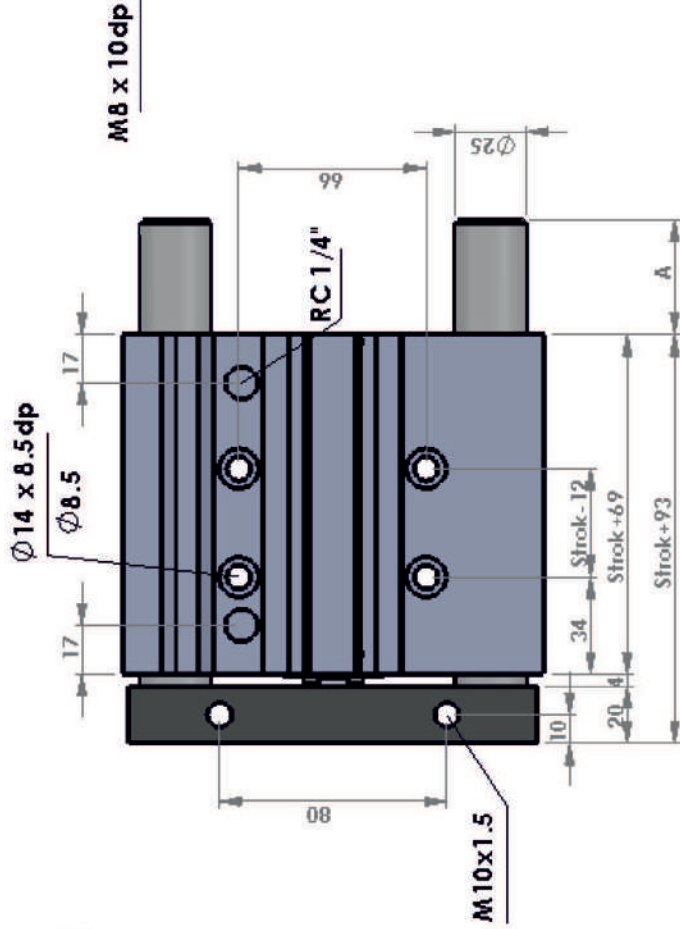
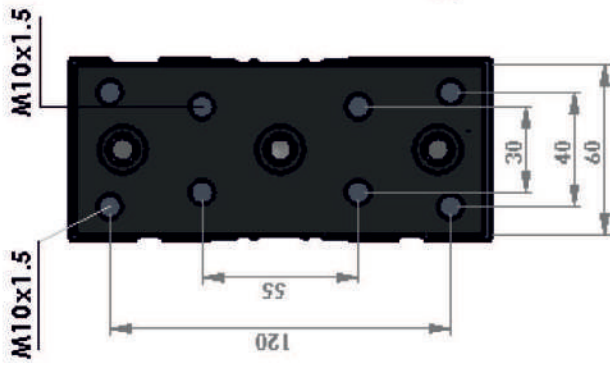
TBS Ø40



Strok (mm)	30	50	75	100	125	150
Sembol	A	0	0	33	33	33

MANYETİK YATAKLI BLOK SİLİNDİR
MAGNETIC GUIDE BLOCK CYLINDER

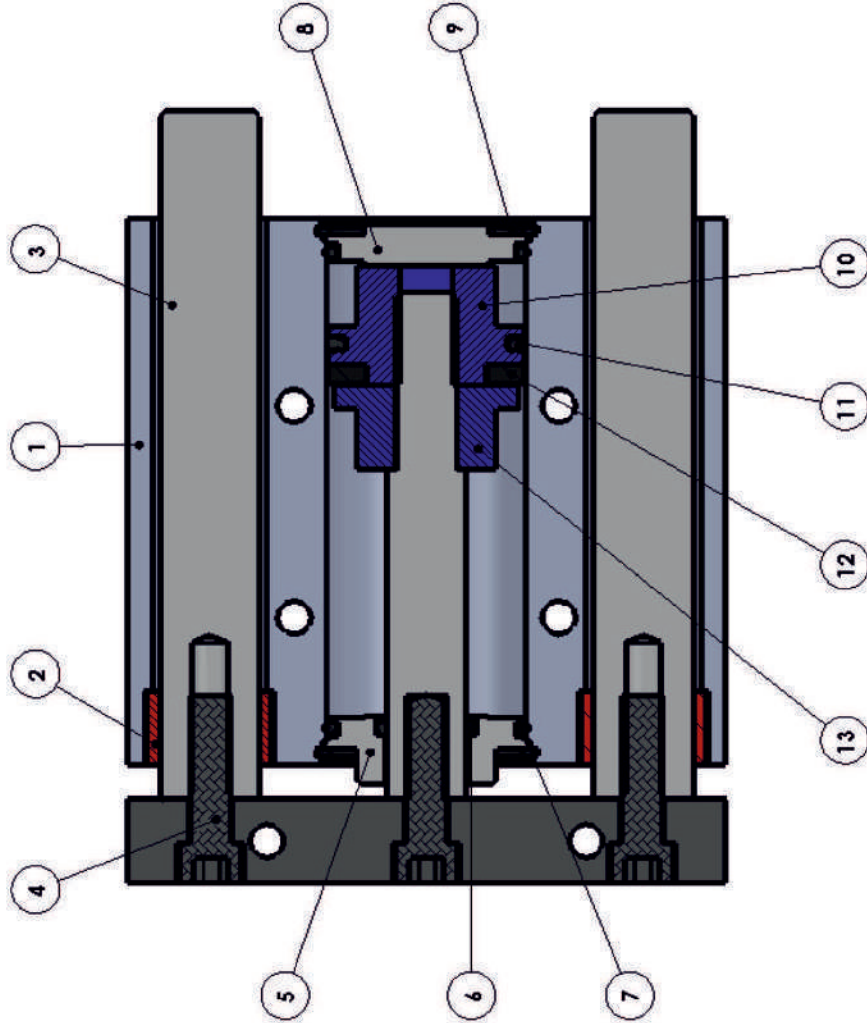
TBS Ø50



Strok (mm)	30	50	75	100	125	150
Sembol	0	0	0	49	49	49
A	0	0	0	49	49	49

MANYETİK YATAKLI BLOK SİLİNDİR

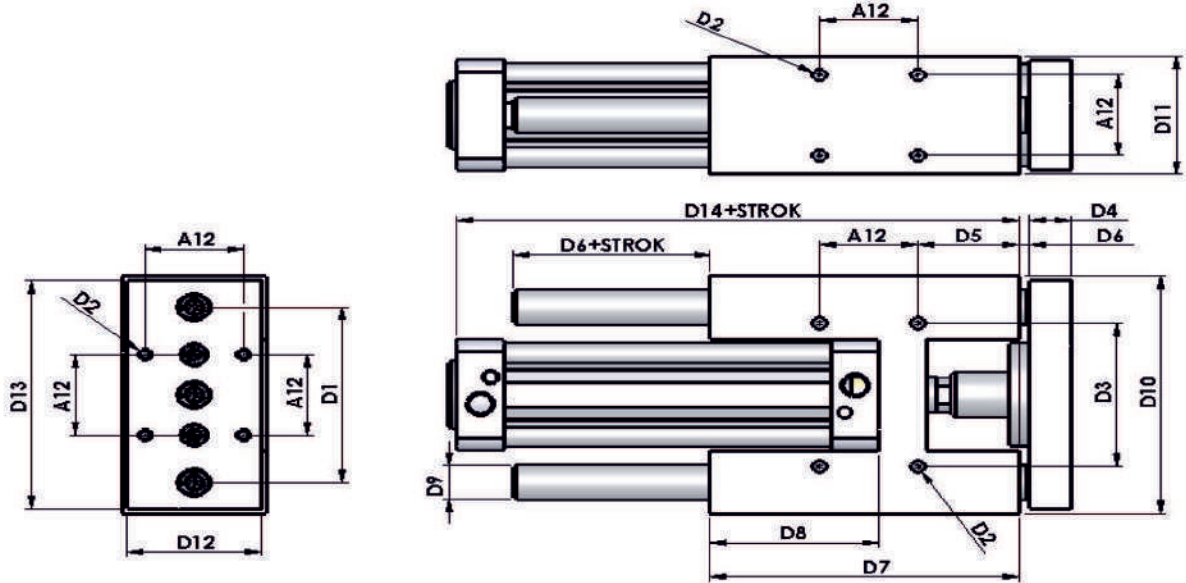
MAGNETIC GUIDE BLOCK CYLINDER



NO	MALZEME ADI	MALZEMESİ	ADET
1	Silindir Borusu	Alüminyum	1
2	Yataklama Burcu	CSB -40	2
3	Desdek mili	CK 45 Sert krom kaplı	2
4	İmbus Cıvata	8x8	3
5	Ön Kapak	Alüminyum	1
6	Bogaz Keçesi	NBR	1
7	O-Ring	NBR	2
8	Arka Kapak	Alüminyum	1
9	Segman	Yay Çeliği	2
10	Piston Kapağı 1	Alüminyum	1
11	Piston Keçesi	NBR	1
12	Miknatis		1
13	Piston Yatağı 2	Alüminyum	1

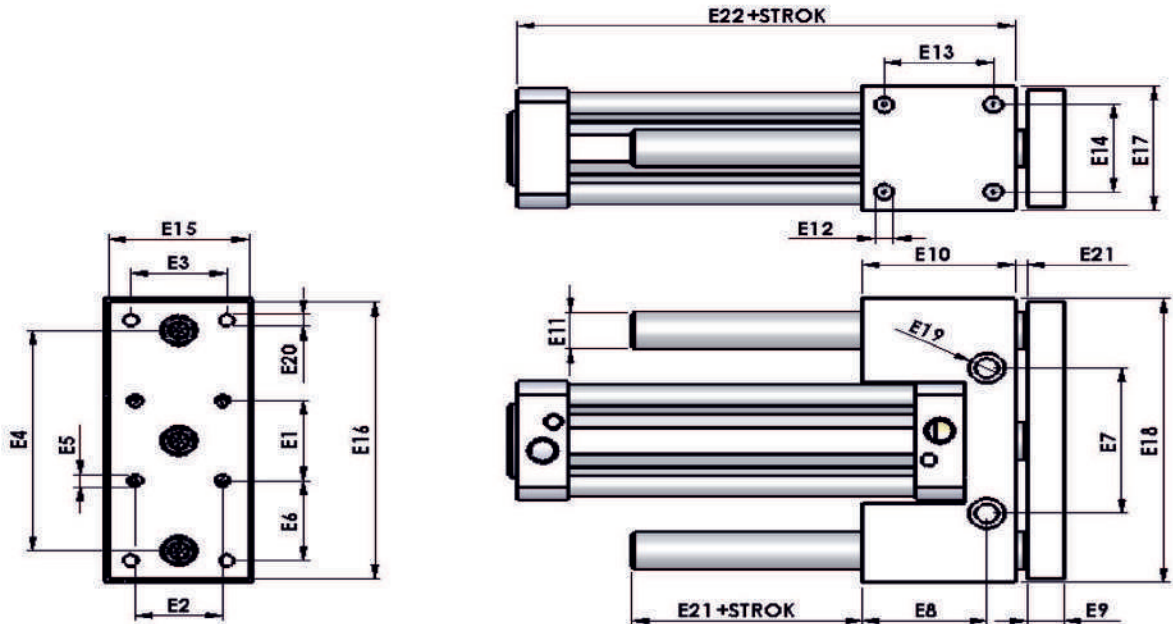
CETOP RP 43 P

H YATAKLI ALÜMİNYUM SİLİNDİR (HY) / H GUIDE ALUMINIUM CYLINDER (HG)



Ø	D1	D2	D3	D4	D5	D6	D7	D8	D9	D10	D11	D12	D13	D14
32	74	M6	61	15	34	5	115	67	12	99	50	45	95	140.5
40	87	M6	69	15	43	5	134	77	16	119	56	50	115	160.5
50	104	M8	85	20	49	5	150	82	20	141	70	65	135	173
63	119	M8	100	20	55	5	170	96	20	156	80	75	150	186

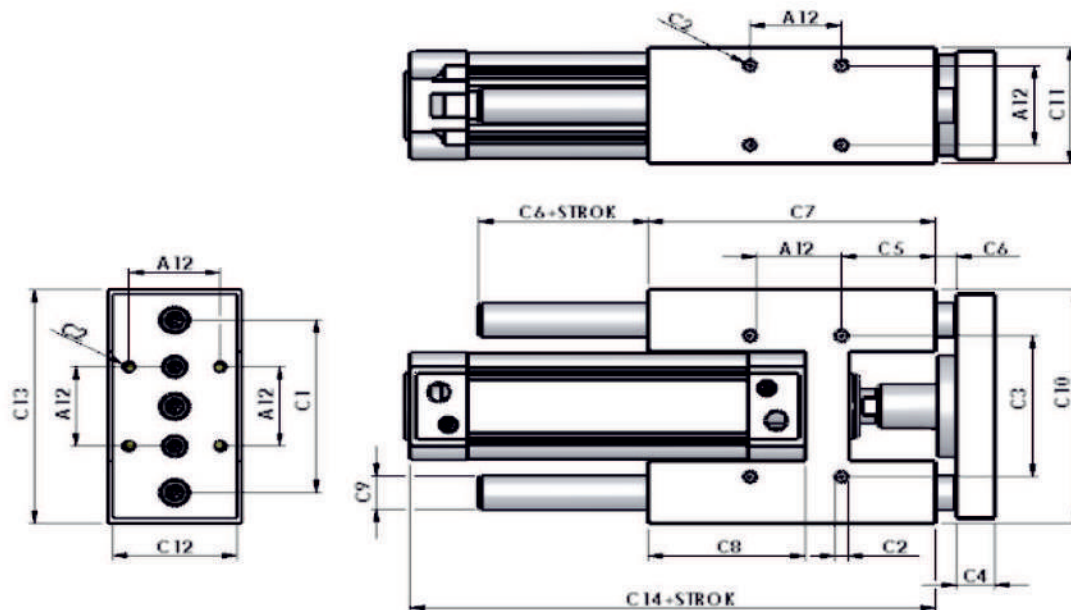
U YATAKLI ALÜMİNYUM SİLİNDİR (UY) / U GUIDE ALUMINIUM CYLINDER (SSC)



Ø	E1	E2	E3	E4	E5	E6	E7	E8	E9	E10	E11	E12	E13	E14	E15	E16	E17	E18	E19	E20	E21	E22
32	40	22	30	90	M8	32	56	44	15	55	12	M8	35	32	40.5	118	47	120	Ø13.5X8,5-Ø8.5	M6	5	109.5
40	40	32	32	96	M8	32	64	46	15	58	16	M8	38	40	49	122	55	124	Ø13.5X8,5-Ø8.5	M8	5	123.5
50	44	44	44	121	M8	44	80	57	17	70	20	M10	50	48	64	152	68	156	Ø16.5X10.5-Ø10,5	M8	5	128
63	46	58	58	130	M8	47	88	62	17	75	20	M10	55	60	78	160	80	164	Ø16.5X10.5-Ø10,5	M8	5	138

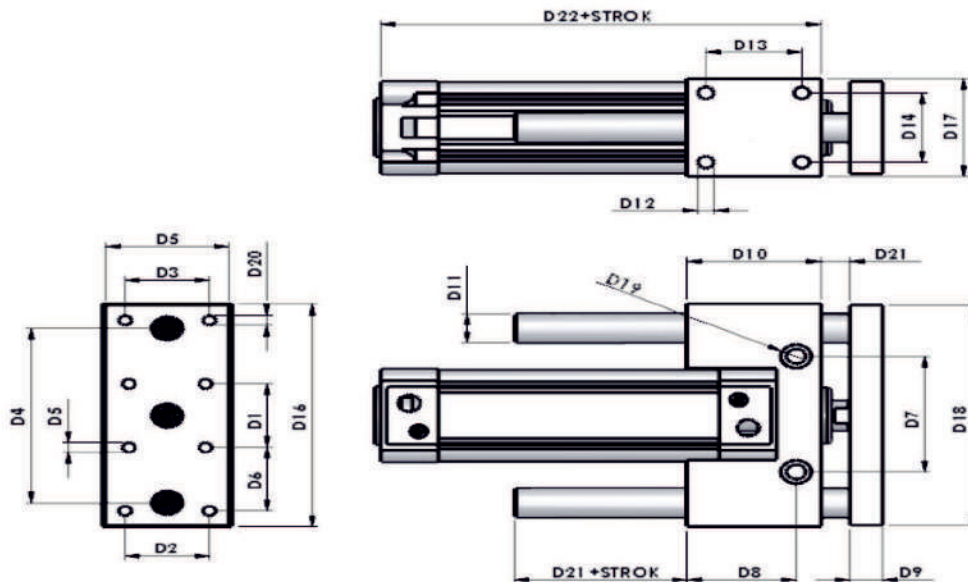
ISO 6431

H YATAKLI SİLİNDİR (HY) / H GUIDE CYLINDER (HG)



Ø	C1	C2	C3	C4	C5	C6	C7	C8	C9	C10	C11	C12	C13	C14
32	74	M6	61	15	34	5	115	67	12	99	50	45	95	151
40	87	M6	69	15	43	5	134	77	16	119	56	50	115	161
50	104	M8	85	20	49	5	150	82	20	141	70	65	135	172.5
63	119	M8	100	20	55	5	170	96	20	156	80	75	150	195

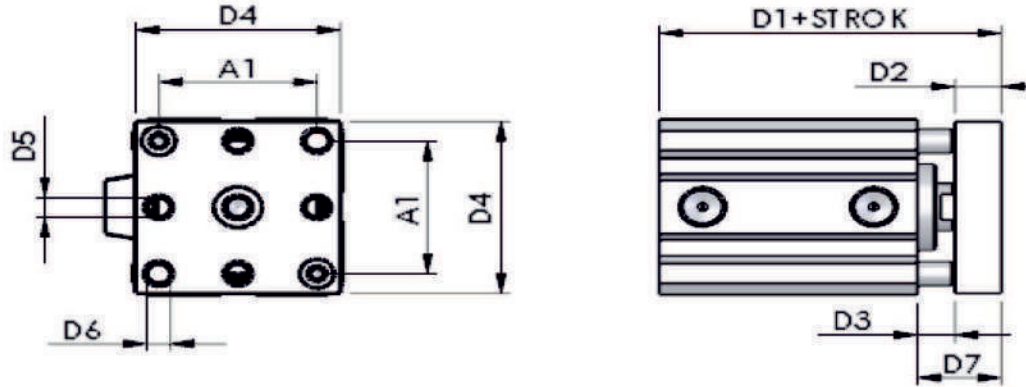
U YATAKLI SİLİNDİR (UY) / U GUIDE CYLINDER (SSC)



Ø	D1	D2	D3	D4	D5	D6	D7	D8	D9	D10	D11	D12	D13	D14	D15	D16	D17	D18	D19	D20	D21	D22
32	40	22	30	90	M8	32	56	44	15	55	16	M8	35	32	40.5	##	47	120	Ø13.5X8,5-Ø8,5	M6	5	114
40	40	32	32	96	M8	32	64	46	15	58	16	M8	38	40	49	##	55	124	Ø13.5X8,5-Ø8,5	M8	5	126
50	44	44	44	121	M8	44	80	57	17	70	20	M10	50	48	64	##	68	156	Ø16.5X10,5-Ø10,5	M8	5	130
63	46	58	58	130	M8	47	88	62	17	75	20	M10	55	60	78	##	80	164	Ø16.5X10,5-Ø10,5	M8	5	152

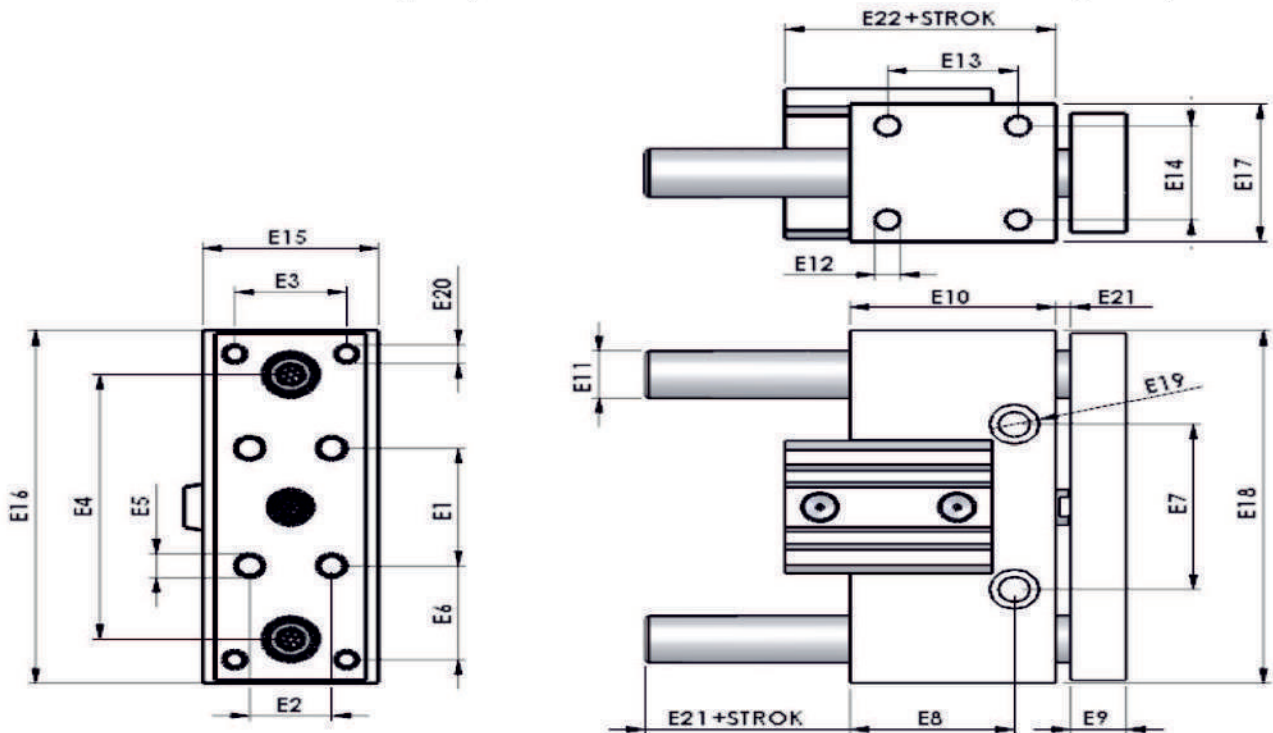
JİG SİLİNDİR GRUBU

TABLALI JİG SİLİNDİR (TJS) / SLIDE BLOCK SHORT STROKE CYLINDER (SBS)



Ø	D1	D2	D3	D4	D5	D6	D7
25	36,5	8	6,5	40	M6	6,5	14,5
32	43,5	10	8	44	M6	6,5	18
40	46,5	12	8	52	M8	9	20
50	52,5	14	9,5	62	M8	9	23,5
63	57,3	14	9,5	75	M8	9	23,5
80	67,5	16	10,5	94	M12	13	26,5
100	71,5	16	10	114	M12	13	26

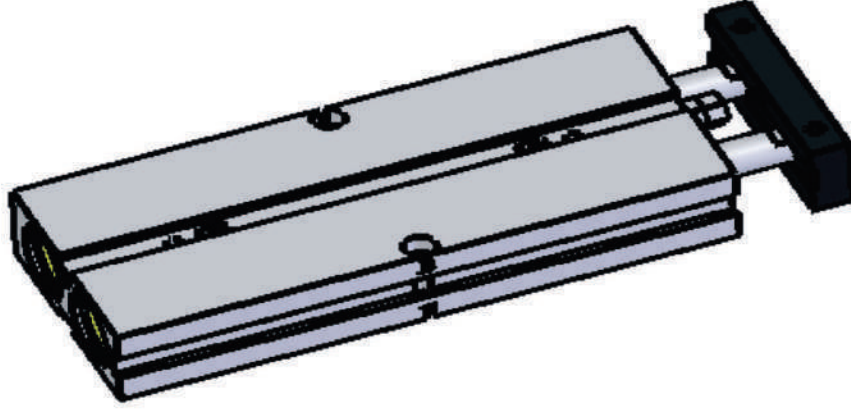
U YATAKLI JİG SİLİNDİR (UY) / U GUIDE SHORT STROKE CYLINDER (SSS)



Ø	E1	E2	E3	E4	E5	E6	E7	E8	E9	E10	E11	E12	E13	E14	E15	E16	E17	E18	E19	E20	E21	E22
32	40	22	30	90	M8	32	56	44	15	55	16	M8	35	32	40,5	118	47	120	Ø13x8.5-Ø8.5	M6	5	42,5
40	40	32	32	96	M8	32	64	46	15	58	16	M8	38	40	49	122	55	124	Ø13x8.5-Ø8.5	M8	5	46,5
50	44	44	44	121	M8	44	80	57	17	70	20	M10	50	48	64	152	68	156	Ø16.5x8.5-Ø10.5	M8	5	52
63	46	58	58	130	M8	47	88	62	17	75	20	M10	55	60	78	160	80	164	Ø16.5x8.5-Ø10.5	M8	5	59,8

ÇİFT MİLLİ BLOK SİLİNDİR

TWINROD CYLINDER



TEKNİK ÖZELLİKLER / TECHNICAL PROPERTIES

Çalışma Ortamı / Operating Environment	Filtrelenmiş Sıkıştırılmış Hava / Filtered compressed air
Çalışma Sıcaklığı / Operating Temperature	-10/+60C°
Çalışma Basıncı min / Operating pressure min.	0.1Mpa
Çalışma Basıncı max. / Operating pressure max.	1.2Mpa
Uygulanabilir Hız / Applicable speed	500-700 mm/s
Yağlama / Lubrication	Şartlandırıcı Yağı / 10 number naturel FRL oil
Strok Hatası / Stroke error	±0.3mm
Hareket Tipi / Action type	Çift etkili / Double action
Mil / Rod	CK-45 Sert Krom Kaplı / CK 45 Hard Chrome Plated
Sızdırmazlık / Seals	Poliüretan+NBR / Polyurethane + NBR
Boru / Pipe	ALMGSI05 Extrüzyon / ALMGSI05
Manyetik Sivic / Magnet switch	SDA-25

Ø	STANDART STROKLAR
15 - 20 - 25 - 32	10 - 20 - 25 - 30 - 40 - 50 - 75 - 100 - 125 - 150 - 175 - 200

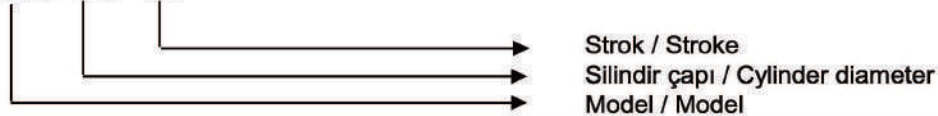
Boru çapı (Pipe Size)	Mil Çapı (Rod Dia.)	Etki Yönü (Action)	Piston Alanı (Piston Area) cm ²	Etki Eden Basınç Alan(Bar=Kgf/cm ²)						
				1	2	3	4	5	6	7
15	8	İtme/Push	4	4	8	12	16	20,1	24,1	28,1
		Çekme/Pull	3	3	6	9	12	15	18	21
20	10	İtme/Push	6,2	6,2	12,5	18,8	25,1	31,4	37,6	43,9
		Çekme/Pull	4,7	4,7	9,4	14,1	18,8	23,5	28,2	32,9
25	12	İtme/Push	9,8	9,8	19,6	29,4	39,2	49,1	58,8	68,5
		Çekme/Pull	7,5	7,5	15,1	22,6	30,2	37,7	45,3	52,8
32	16	İtme/Push	16	16	32,1	48,2	64,3	80,4	96,4	112,5
		Çekme/Pull	12	12,1	24,1	36,2	48,2	60,3	72,4	84,4

Sipariş nasıl verilir ? / How to Order ?

Model Silindir çapı Strok / Model Cylinder Diameter Stroke

TCBS - 025 - 100

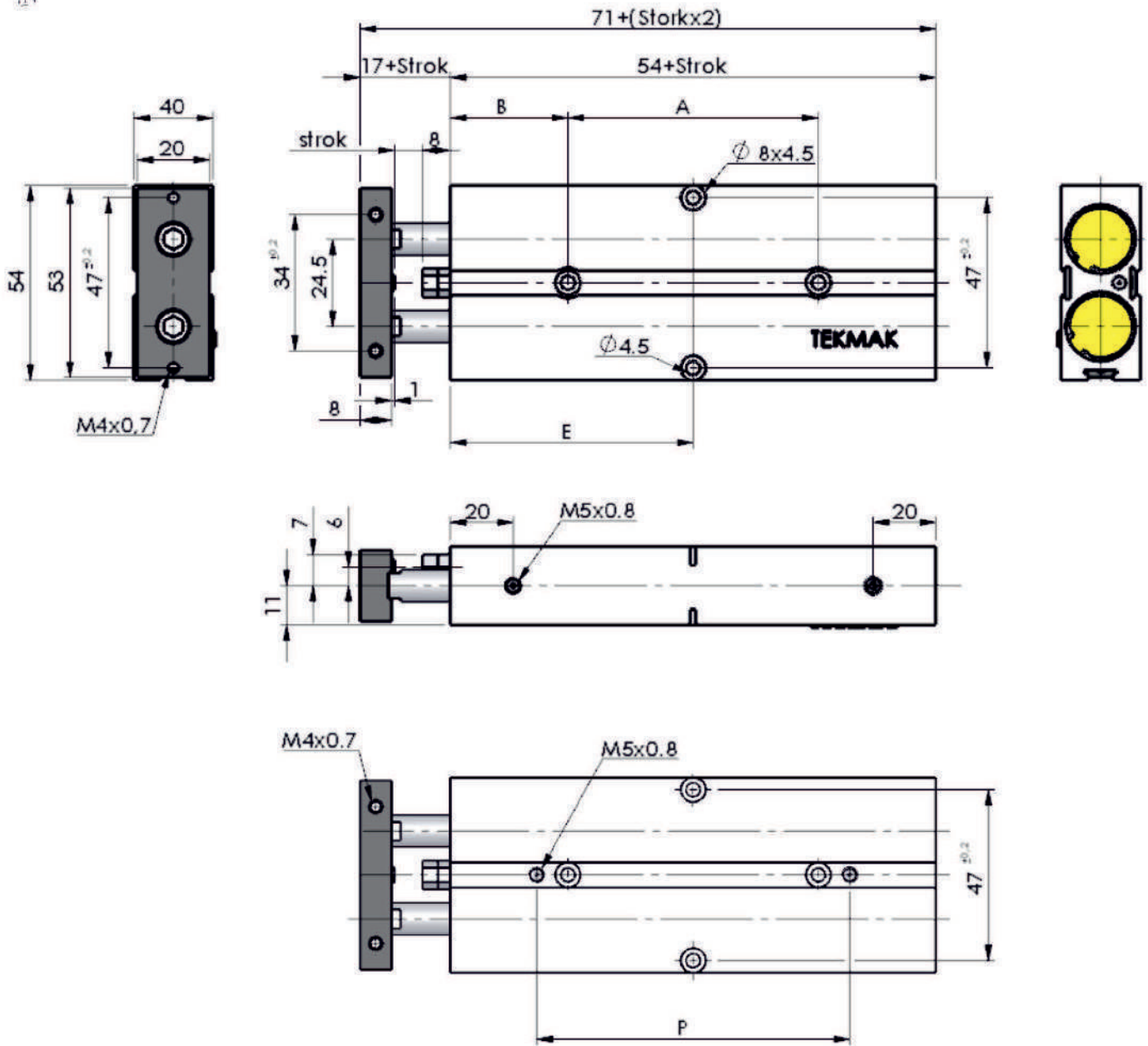
TCBS - 025 - 100



ÇİFT MİLLİ BLOK SİLİNDİR

TWINROD CYLINDER

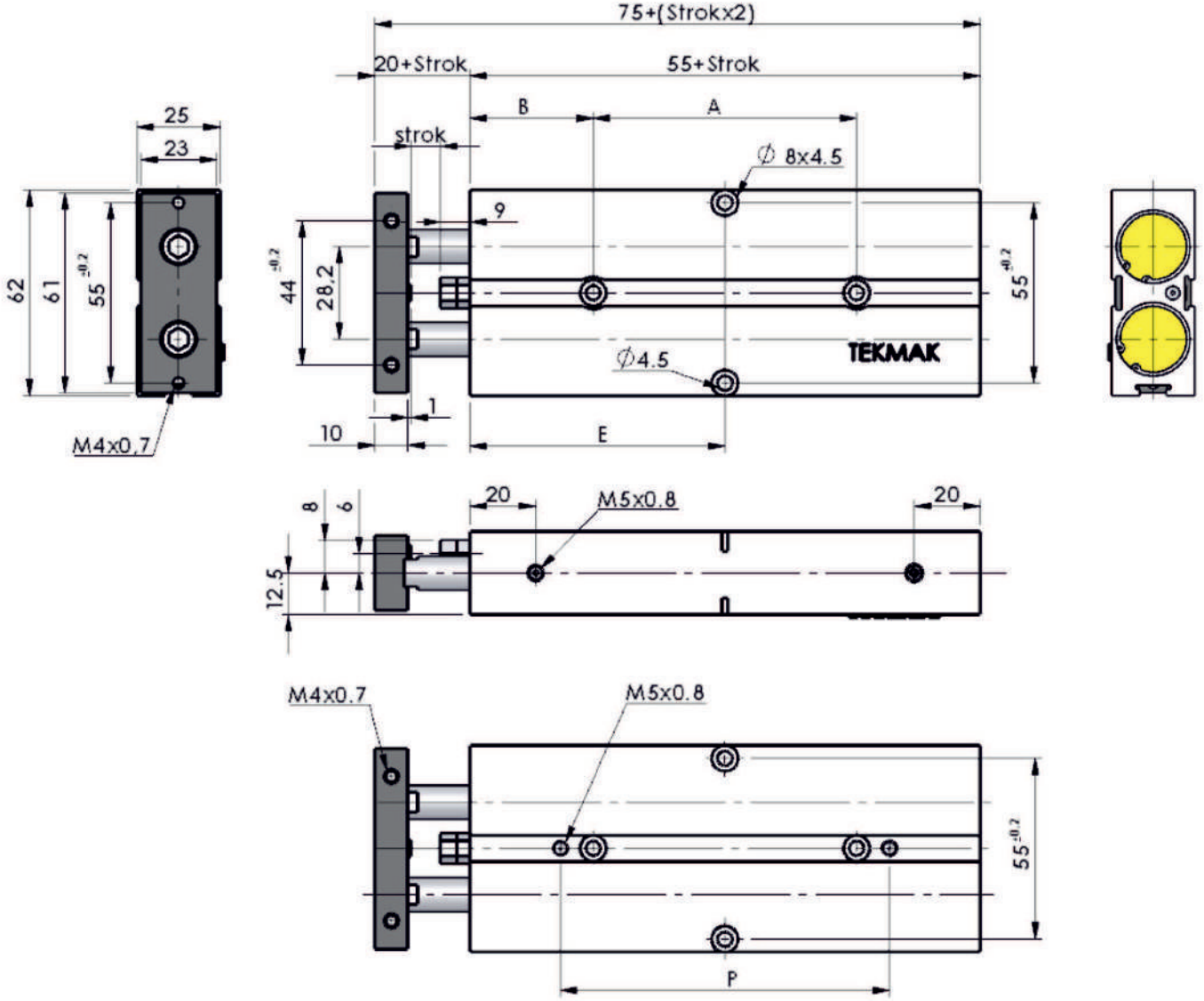
TCBS Ø15



Sembol	Strok (mm)												
	10	20	25	30	40	50	75	100	125	150	175	200	
A	20	20	20	20	30	40	60	80	100	100	100	100	
B	22	27	39,5	32	32	32	34,5	37	39,5	52	64,5	77	
E	32	37	39,5	42	47	52	64,5	77	89,5	102	114,5	127	
P			40	40	50	60	80	100	120	120	120	120	

ÇİFT MİLLİ BLOK SİLİNDİR TWINROD CYLINDER

TCBS Ø20

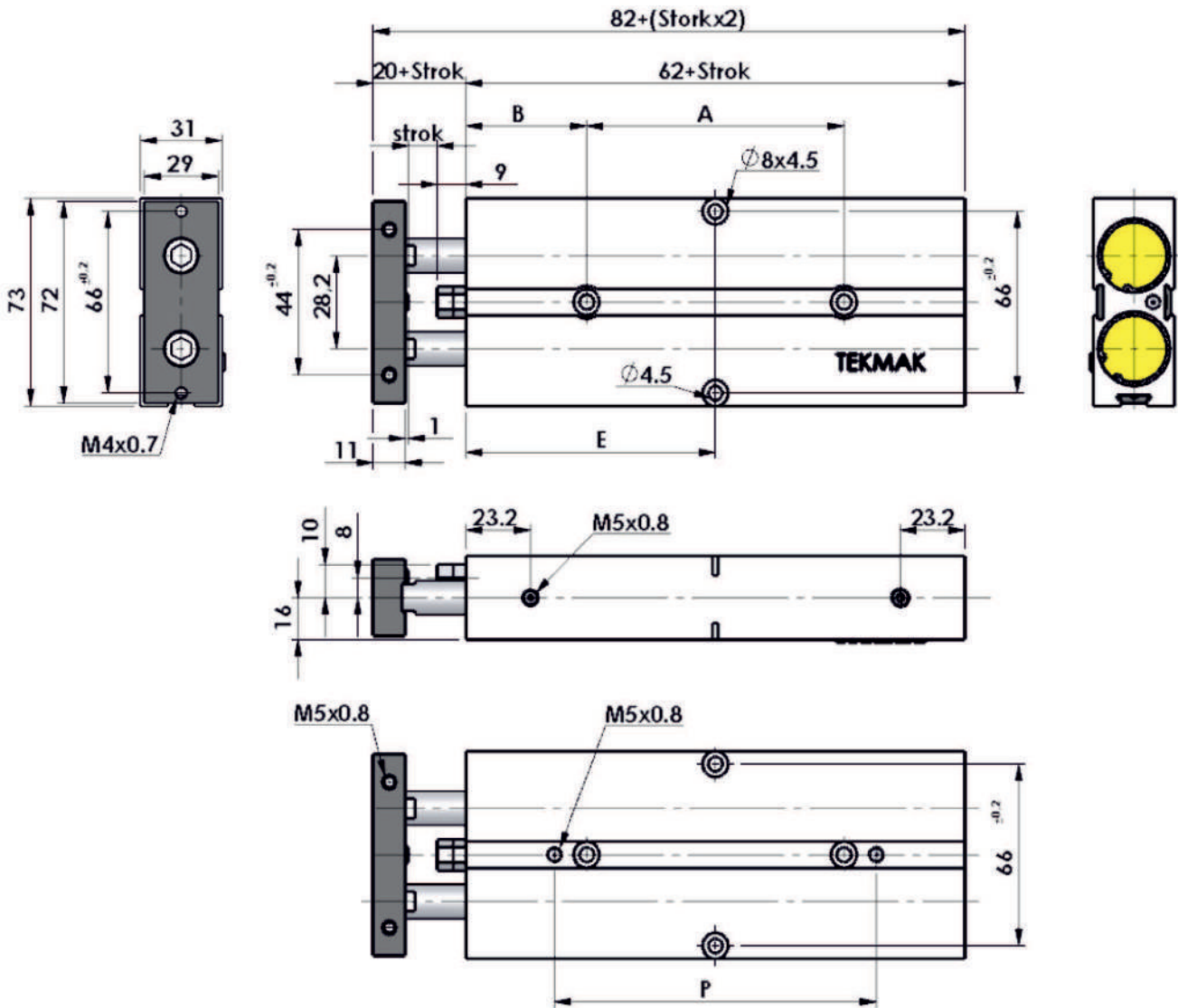


Strok (mm)	10	20	25	30	40	50	75	100	125	150	175	200
Sembol												
A	20	20	20	20	30	40	60	80	100	100	100	100
B	22,5	27,5	30	32,5	32,5	32,5	35	37,5	40	52,5	65	77,5
E	32,5	37,5	40	42,5	47,5	52,5	65	77,5	90	102,5	115	127,5
P			40	40	50	60	80	100	120	120	120	120

ÇİFT MİLLİ BLOK SİLİNDİR

TWINROD CYLINDER

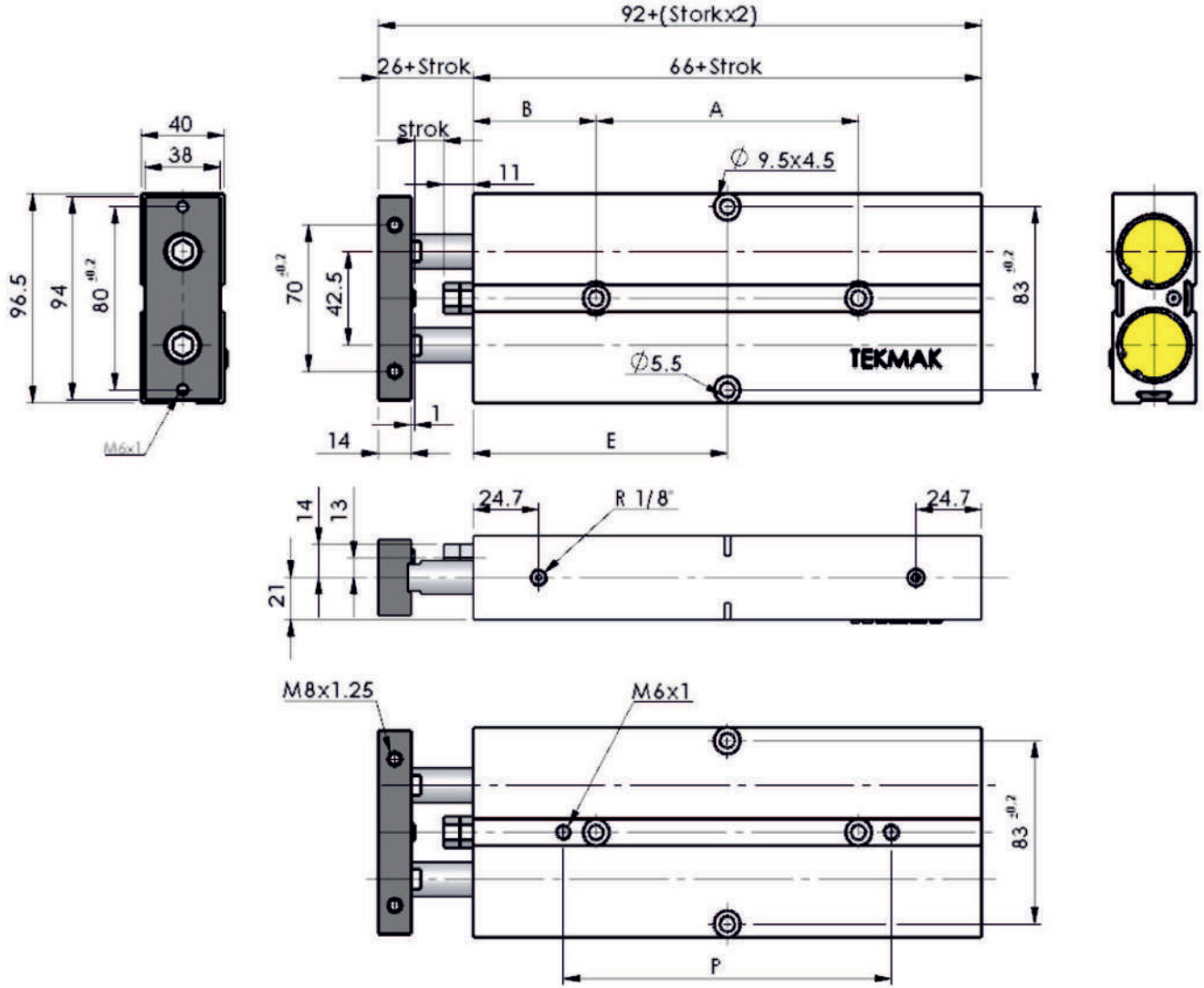
TCBS Ø25



Strok (mm)	10	20	25	30	40	50	75	100	125	150	175	200
Sembol												
A	20	20	20	20	30	40	60	80	100	100	100	100
B	26	31	33,5	36	36	36	38,5	41	43,5	56	68,5	81
E	36	41	43,5	46	51	56	68,5	81	93,5	106	118,5	131
P			40	40	50	60	80	100	120	120	120	120

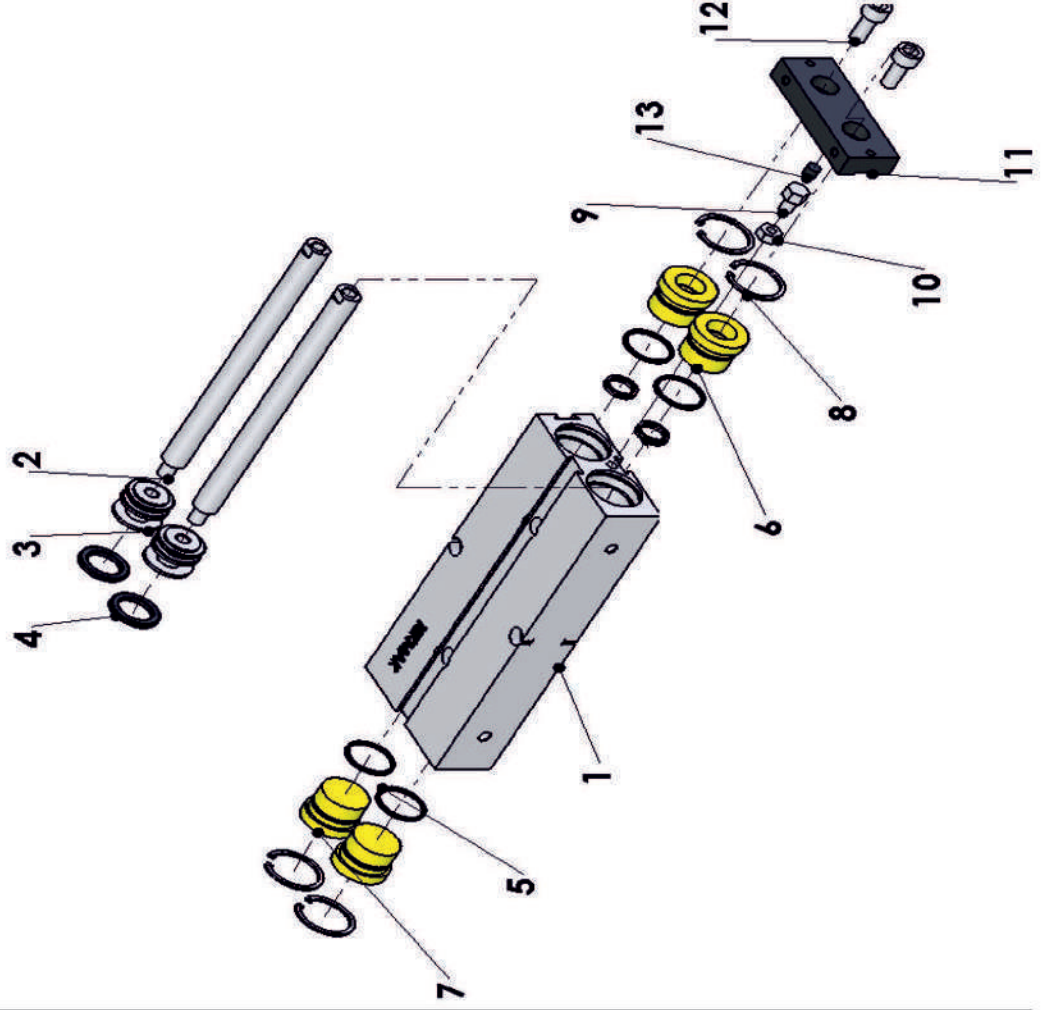
ÇİFT MİLLİ BLOK SİLİNDİR TWINROD CYLINDER

TCBS Ø32



Sembol	Strok (mm)												
	10	20	25	30	40	50	75	100	125	150	175	200	
A	20	20	20	20	30	40	60	80	100	100	100	100	
B	28	33	35,5	38	38	38	40,5	43	45,5	58	70,5	83	
E	38	43	45,5	48	53	58	70,5	83	95,5	108	120,5	133	
P			30	30	40	50	80	100	120	120	120	120	

ÇİFT MİLLİ BLOK SİLİNDİR TWINROD CYLINDER



Numara NR.	Parça Adı Name of the Parts	Malzemesi Material
1	Silindir Boru Cylinder Tube	Alüminyum Aluminium
2	Piston Mil Piston Rod	CK 45 Sert krom kaplı CK 45 Hard Chrome plated
3	Keçe Yatağı Seal Bed	Alüminyum Aluminium
4	Piston Keçesi Piston Seal	NBR
5	O-Ring	NBR
6	Ön Kapak Head Cover	Alüminyum Aluminium
7	Arka Kapak Back Cover	Alüminyum Aluminium
8	Segman Spring	Yay Çeliği Spring Steel
9	Cıvata Bolt	Galvanizli Çelik Galvanized Steel
10	Somun Nut	Galvanizli Çelik Galvanized Steel
11	Piston Kapağı Piston Cover	Alüminyum Aluminium
12	Piston Kapağı Cıvata Piston Cover Bolt	Galvanizli Çelik Galvanized Steel
13	Dayama Gauge	Alüminyum Aluminium